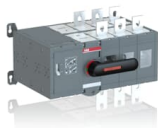




PRODUCT-DETAILS

OTM630E3CM110V

OTM630E3CM110V MOTORIZED C/O SWITCH



General Information	
Extended Product Type	OTM630E3CM110V
Product ID	1SCA022873R1050
EAN	6417019339610
Catalog Description	OTM630E3CM110V MOTORIZED C/O SWITCH
Long Description	Including a handle for manual operation, bolt kit with nut and washers for all terminals and male connectors for control circuits. Include a storage clip for the handle and spare fuses.

ABB EcoSolutions	
End Of Life Disassembling Instructions	1SCC303059M0201
Environmental Information	1SCC303036D0202
Environmental Product Declaration - EPD	1SCC303100D0201

Material Compliance	
Conflict Minerals Reporting Template (CMRT)	9AKK108467A5658
REACH Declaration	1SCC011021D0201
RoHS Information	1SCC011020D0201
RoHS Status	Following EU Directive 2011/65/EU and Amendment 2015/863 July 22, 2019

Popular Downloads	
Data Sheet, Technical Information	1SCC303003C0201
Instructions and Manuals	1SCC303002M0204
Environmental Product Declaration - EPD	1SCC303100D0201

Environmental	
Degree of Protection	Front IP20
Environmental Information	1SCC303036D0202
Pollution Degree	3

Ordering	
Minimum Order Quantity	1 piece
Customs Tariff Number	85365080
Country of Origin	Finland (FI)

Dimensions	
Product Net Width	411 mm 16.18 in
Product Net Height	250 mm 9.84 in
Product Net Depth / Length	299 mm 11.77 in
Product Net Weight	22 kg 48.5 lb

Container Information	
Package Level 1 Units	box 1 box
Package Level 1 Width	310 mm
Package Level 1 Depth / Length	560 mm
Package Level 1 Height	330 mm
Package Level 1 Gross Weight	22.08 kg
Package Level 1 EAN	6417019339610

Technical

Conventional Free-air Thermal Current (I_{th})	$\Theta = 40\text{ °C}$ 630 A
Conventional Thermal Current (I_{the})	Fully Enclosed 630 A
Degree of Protection	Front IP20
Distance Between Phases	Standard
Handle Color	Black
Handle Type	Direct mounted handle
Motor Operational Voltage	110 ... 125 V AC/DC
Mounting Type	Base mounting
Number of Poles	3P
Operating Mode	Front operated
Pollution Degree	3
Position of Line Terminals	Top In - Bottom Out, Bottom In - Top Out
Power Loss	at Rated Operating Conditions per Pole 25 W
Rated Impulse Withstand Voltage (U_{imp})	12 kV
Rated Insulation Voltage (U_i)	1000 V
Rated Operational Current AC-21A (I_e)	(380 ... 415 V) 630 A (500 V) 630 A (690 V) 630 A
Rated Operational Current AC-22A (I_e)	(380 ... 415 V) 630 A (500 V) 630 A (690 V) 630 A
Rated Operational Current AC-23A (I_e)	(380 ... 415 V) 630 A (500 V) 630 A (690 V) 630 A
Rated Operational Current AC-31B (I_e)	(380 ... 415 V) 630 A
Rated Operational Current AC-33B (I_e)	(380 ... 415 V) 630 A
Rated Operational Power AC-23A (P_e)	(380 ... 415 V) 355 kW (500 V) 400 kW (690 V) 630 kW
Rated Operational Voltage	Main Circuit 1000 V
Rated Short-time Withstand Current Low Voltage (I_{cw})	for 1 s 20 kiloampere rms
Switches Operating Mechanism	Mechanism at the End of the Switch
Terminal Type	Screw Terminals
Tightening Torque	acc. IEC 60947-1 50 ... 75 N·m
Transition Type	Open

Technical UL/CSA

Tightening Torque	acc. IEC 60947-1 50 ... 75 N·m
-------------------	--------------------------------

Certificates and Declarations

Declaration of
Conformity - CE

1SCC303033D2702

External Classifications and Standards

Object Classification Code	Q
ETIM 8	EC000216 - Switch disconnect
ETIM 9	EC000216 - Switch disconnect (low voltage)
UNSPSC	39122214
IDEA Granular Category Code (IGCC)	5208 >> Controller switch
eClass	V11.1 : 27371403
WEEE Category	5. Small Equipment (No External Dimension More Than 50 cm)
E-Number (Finland)	3641760

Categories

Low Voltage Products and Systems → Switches → Change-over and Transfer Switches → Motorized Change-over Switches

