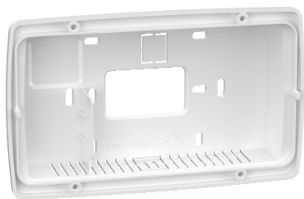


Product datasheet

Specifications



Modicon M171 Performance White wall support display

TM171ABKPB

⚠ Discontinued on: 24 Oct 2020

⚠ To be discontinued

Main

Range of product	Modicon M171/M172
Accessory / separate part category	Mounting accessory
accessory / separate part type	Mounting support

Complementary

Product or component type	Mounting support
Product compatibility	Logic controller M171 performance flush mounting
Colour	White
Accessory / separate part destination	Remote display
Product specific application	Wall mounting support
Fixing mode	By screws
Width	160 mm
Depth	30 mm
Height	96 mm
Product weight	0.015 kg

Packing Units

Unit Type of Package 1	PCE
Number of Units in Package 1	1
Package 1 Height	2.8 cm
Package 1 Width	9.6 cm
Package 1 Length	16.0 cm
Package 1 Weight	70.0 g
Unit Type of Package 2	S01
Number of Units in Package 2	10
Package 2 Height	15.0 cm
Package 2 Width	15.0 cm
Package 2 Length	40.0 cm
Package 2 Weight	906.0 g

Disclaimer: This documentation is not intended as a substitute for and is not to be used for determining suitability or reliability of these products for specific user applications

Sustainability


Green Premium™ label is Schneider Electric's commitment to delivering products with best-in-class environmental performance. Green Premium promises compliance with the latest regulations, transparency on environmental impacts, as well as circular and low-CO₂ products.

Guide to assessing product sustainability is a white paper that clarifies global eco-label standards and how to interpret environmental declarations.

[Learn more about Green Premium >](#)

[Guide to assess a product's sustainability >](#)

Well-being performance

 Mercury Free

Reach Regulation	REACH Declaration
Eu Rohs Directive	Not applicable, out of EU RoHS legal scope
China Rohs Regulation	China RoHS declaration
Weee	The product must be disposed on European Union markets following specific waste collection and never end up in rubbish bins