

# Product data sheet

Specifications



## Modicon M171 Performance Plug-in CAN

TM171ACAN

Product availability: Non-Stock - Not normally stocked in distribution facility

Price\*: 137.55 USD

### Main

Range of Product	Modicon M171
Product or Component Type	Communication module
Communication Port Protocol	CAN2.B

### Complementary

Integrated connection type	CAN port wire crimp - twisted pair
Physical interface	Twisted pair
Supply	Via base board EVD/EVC
Product Compatibility	Logic controller M172 performance Logic controller M171 performance
Net Weight	0.170 lb(US) (0.077 kg)

### Environment

Product Certifications	CE CSA cURus EAC
marking	CE
IP Degree of Protection	IP20
Ambient Air Temperature for Operation	14...131 °F (-10...55 °C)
Ambient Air Temperature for Storage	-4...185 °F (-20...85 °C)
Relative Humidity	10...90 % without condensation

### Ordering and shipping details

Category	US1PC1222537
Discount Schedule	PC12
GTIN	3606480752421
Returnability	No
Country of origin	IT

### Packing Units

Unit Type of Package 1	PCE
Number of Units in Package 1	1

Price is "List Price" and may be subject to a trade discount – check with your local distributor or retailer for actual price.

Disclaimer: This documentation is not intended as a substitute for and is not to be used for determining suitability or reliability of these products for specific user applications

Package 1 Height	5.118 in (13.000 cm)
Package 1 Width	3.583 in (9.100 cm)
Package 1 Length	7.283 in (18.500 cm)
Package 1 Weight	6.384 oz (181.000 g)
Unit Type of Package 2	S02
Number of Units in Package 2	6
Package 2 Height	5.906 in (15.000 cm)
Package 2 Width	11.811 in (30.000 cm)
Package 2 Length	15.748 in (40.000 cm)
Package 2 Weight	2.899 lb(US) (1.315 kg)

## Sustainability

**Green Premium™** label is Schneider Electric's commitment to delivering products with best-in-class environmental performance. Green Premium promises compliance with the latest regulations, transparency on environmental impacts, as well as circular and low-CO<sub>2</sub> products.

**Guide to assessing product sustainability** is a white paper that clarifies global eco-label standards and how to interpret environmental declarations.

[Learn more about Green Premium >](#)

[Guide to assess a product's sustainability >](#)

## Resource performance

✔ Upgradeable Through Digital Modules  
And Upgraded Components

## Well-being performance

✔ Mercury Free

✔ Rohs Exemption Information [Yes](#)

Reach Regulation [REACH Declaration](#)

Eu Rohs Directive Pro-active compliance (Product out of EU RoHS legal scope)

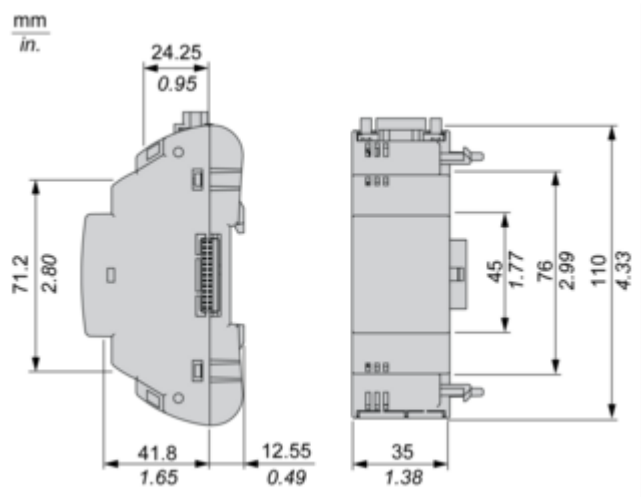
China Rohs Regulation [China RoHS declaration](#)

Weee The product must be disposed on European Union markets following specific waste collection and never end up in rubbish bins.

California Proposition 65 WARNING: This product can expose you to chemicals including: Lead and lead compounds, which is known to the State of California to cause cancer and birth defects or other reproductive harm. For more information go to [www.P65Warnings.ca.gov](http://www.P65Warnings.ca.gov)

Dimensions Drawings

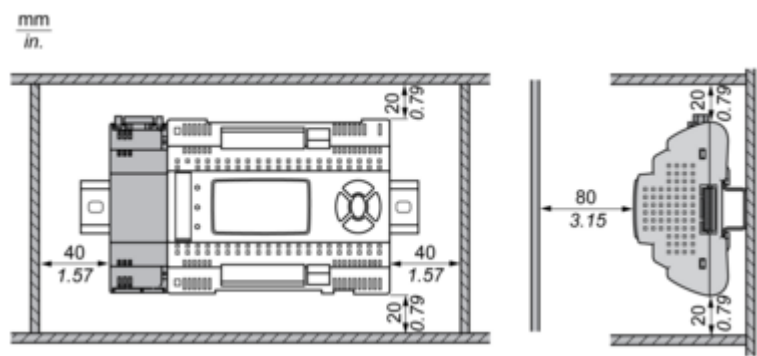
Dimensions



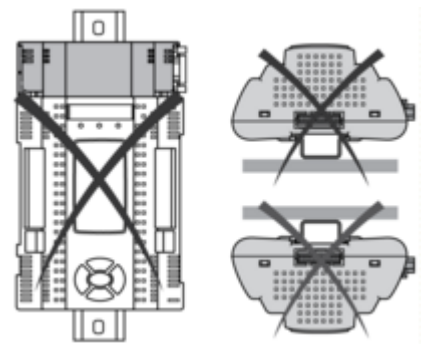
Mounting and Clearance

Mounting and Clearance

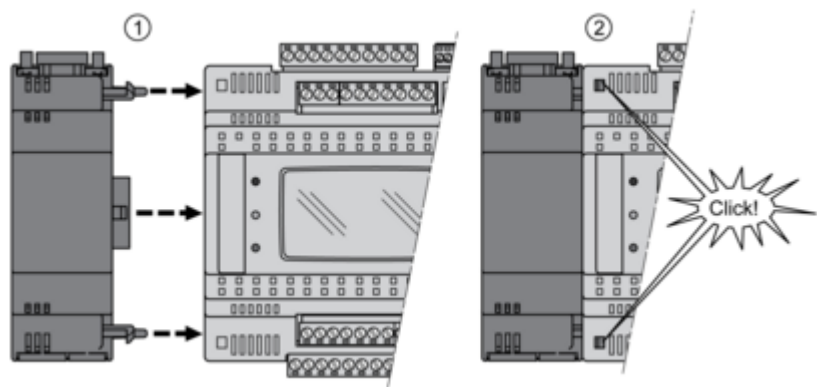
Clearance



Misplacement

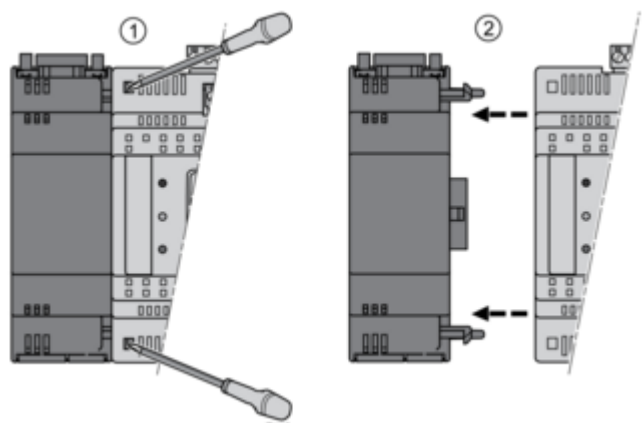


Mounting on Controller



Dismounting

---

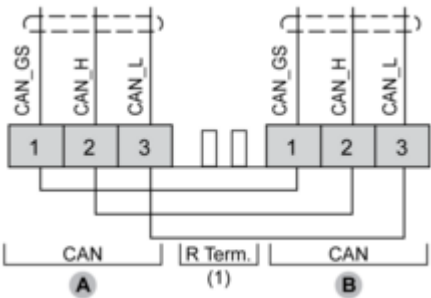
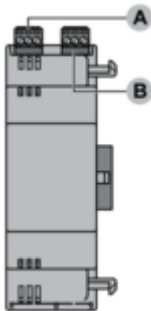


Connections and Schema

Connections and Schema

CAN Communication Module

TM171ACAN



(1) CAN terminal resistance.