

Product data sheet

Specifications



M171 Perf. Plug-in LONWorks

TM171ALON

Product availability: Non-Stock - Not normally stocked in distribution facility

Price*: 324.06 USD

Main

Range of Product	Modicon M171/M172
Product or Component Type	Communication module
Communication Port Protocol	LonWorks

Complementary

Integrated connection type	LON wire crimp - twisted pair
Transmission rate	78 kbits/s
Adjustment	Pitch 3.81 mm
Electrical connection	removable screw terminal block
Physical interface	90° insertion - 0.004 in² (2.5 mm²) cable
Supply	Via base board M171P/M172P
Local signalling	for service 1 LED (red) for status 1 LED (green)
Product Compatibility	Logic controller M171 performance Logic controller M172 performance
Net Weight	0.170 lb(US) (0.077 kg)

Environment

Product Certifications	EAC CSA CE cURus
marking	CE
IP Degree of Protection	IP20
Ambient Air Temperature for Operation	14...131 °F (-10...55 °C)
Ambient Air Temperature for Storage	-4...185 °F (-20...85 °C)
Relative Humidity	10...90 % without condensation

Ordering and shipping details

Category	US1PC1222537
Discount Schedule	PC12
GTIN	3606480894909
Returnability	No
Country of origin	IT

Price is "List Price" and may be subject to a trade discount – check with your local distributor or retailer for actual price.

Disclaimer: This documentation is not intended as a substitute for and is not to be used for determining suitability or reliability of these products for specific user applications

Packing Units

Unit Type of Package 1	PCE
Number of Units in Package 1	1
Package 1 Height	3.5 in (9.0 cm)
Package 1 Width	4.9 in (12.5 cm)
Package 1 Length	5.2 in (13.3 cm)
Package 1 Weight	5.6 oz (160.0 g)
Unit Type of Package 2	S01
Number of Units in Package 2	4
Package 2 Height	5.9 in (15.0 cm)
Package 2 Width	5.9 in (15.0 cm)
Package 2 Length	15.7 in (40.0 cm)
Package 2 Weight	29.5 oz (836.0 g)

Sustainability


Green Premium™ label is Schneider Electric's commitment to delivering products with best-in-class environmental performance. Green Premium promises compliance with the latest regulations, transparency on environmental impacts, as well as circular and low-CO₂ products.

Guide to assessing product sustainability is a white paper that clarifies global eco-label standards and how to interpret environmental declarations.


[Learn more about Green Premium >](#)


[Guide to assess a product's sustainability >](#)

Resource performance

 Upgradeable Through Digital Modules
And Upgraded Components

Well-being performance

 Mercury Free

 RoHS Exemption Information [Yes](#)

Reach Regulation [REACH Declaration](#)

Eu RoHS Directive Pro-active compliance (Product out of EU RoHS legal scope)

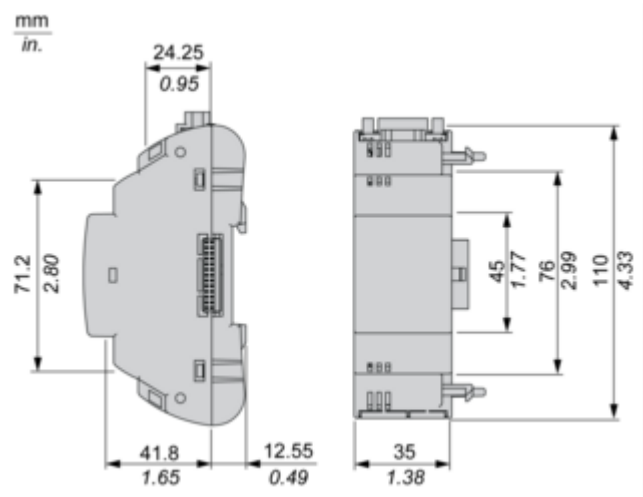
China RoHS Regulation [China RoHS declaration](#)

Weee The product must be disposed on European Union markets following specific waste collection and never end up in rubbish bins.

California Proposition 65 WARNING: This product can expose you to chemicals including: Lead and lead compounds, which is known to the State of California to cause cancer and birth defects or other reproductive harm. For more information go to www.P65Warnings.ca.gov

Dimensions Drawings

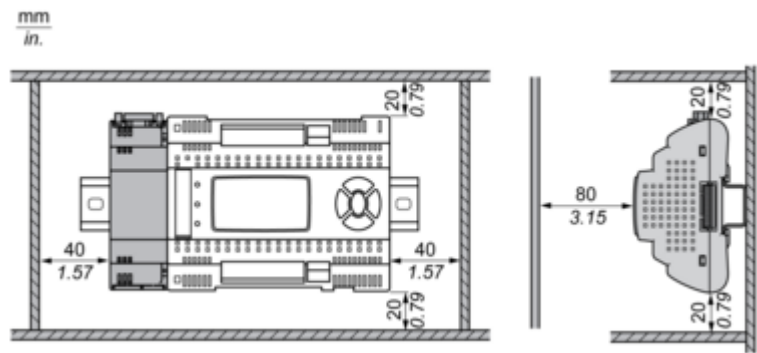
Dimensions



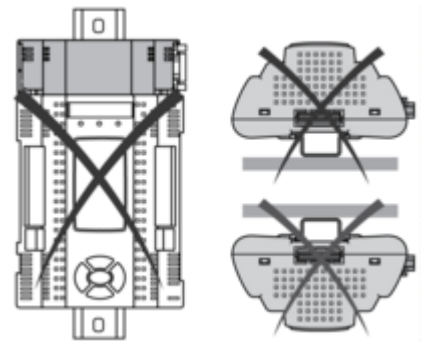
Mounting and Clearance

Mounting and Clearance

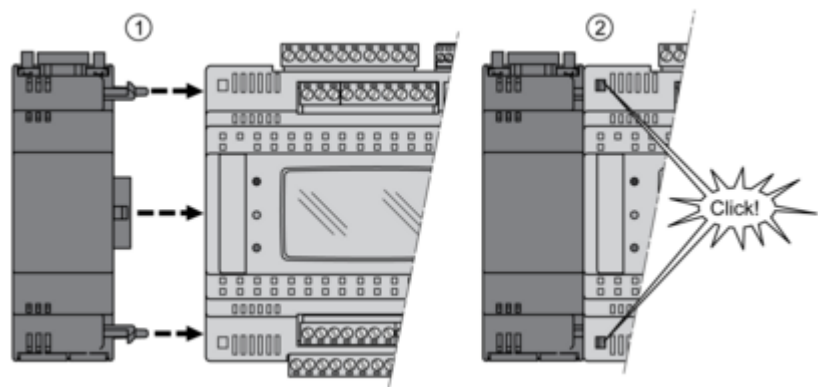
Clearance



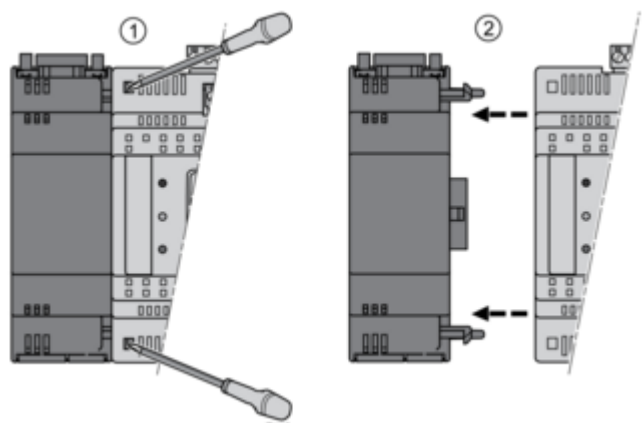
Misplacement



Mounting on Controller



Dismounting

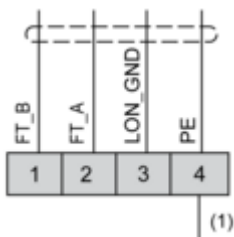
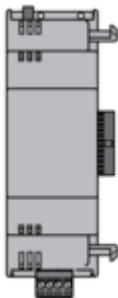


Connections and Schema

Connections and Schema

LonWorks Communication Module

TM171ALON



(1) PE to be connected externally to the protective earth.