

# Product datasheet

Specifications



## Modicon M171 Performance Plug-in Profibus

TM171APBUS

- Discontinued on: 29 Apr 2024
- To be end-of-service on: 29 Apr 2025

Discontinued

EAN Code: 3606480752544

### Main

Range of product	Modicon M171
product or component type	Communication module
Communication port protocol	Profibus

### Complementary

Integrated connection type	Profibus DP DB9 - shielded RS232 cable
Supply	Via base board EVD/EVC
Product compatibility	Logic controller M171 performance
net weight	0.077 kg

### Environment

Product certifications	cURus CE CSA EAC
marking	CE
IP degree of protection	IP20
Ambient air temperature for operation	-10...55 °C
Ambient air temperature for storage	-20...85 °C
Relative humidity	10...90 % without condensation

### Packing Units

Unit Type of Package 1	PCE
Number of Units in Package 1	1
Package 1 Height	13.0 cm
Package 1 Width	9.1 cm
Package 1 Length	18.5 cm
Package 1 Weight	218.0 g
Unit Type of Package 2	S02
Number of Units in Package 2	6
Package 2 Height	15.0 cm
Package 2 Width	30.0 cm

Disclaimer: This documentation is not intended as a substitute for and is not to be used for determining suitability or reliability of these products for specific user applications

Package 2 Length	40.0 cm
Package 2 Weight	1.716 kg

## Logistical informations

Country of origin	IT
-------------------	----

## Contractual warranty

Warranty	18 months
----------	-----------

# Sustainability


**Green Premium™ label** is Schneider Electric's commitment to delivering products with best-in-class environmental performance. Green Premium promises compliance with the latest regulations, transparency on environmental impacts, as well as circular and low-CO<sub>2</sub> products.

**Guide to assessing product sustainability** is a white paper that clarifies global eco-label standards and how to interpret environmental declarations.


[Learn more about Green Premium >](#)


[Guide to assess a product's sustainability >](#)

## Resource performance

 Upgradeable Through Digital Modules  
And Upgraded Components

## Well-being performance

 Mercury Free

 Rohs Exemption Information [Yes](#)

Reach Regulation [REACH Declaration](#)

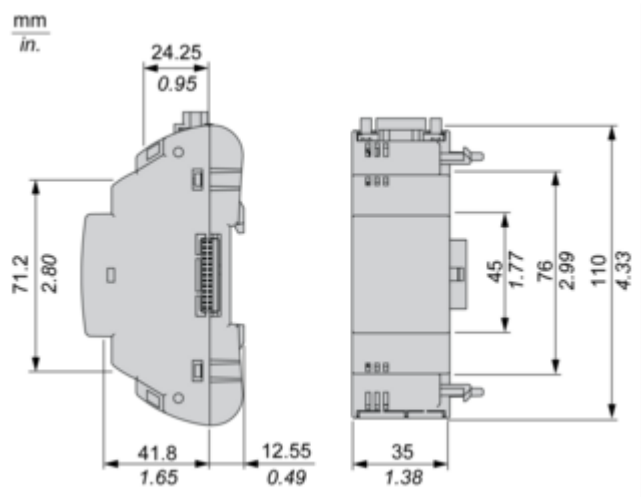
Eu Rohs Directive Pro-active compliance (Product out of EU RoHS legal scope)

China Rohs Regulation [China RoHS declaration](#)

Weee The product must be disposed on European Union markets following specific waste collection and never end up in rubbish bins

Dimensions Drawings

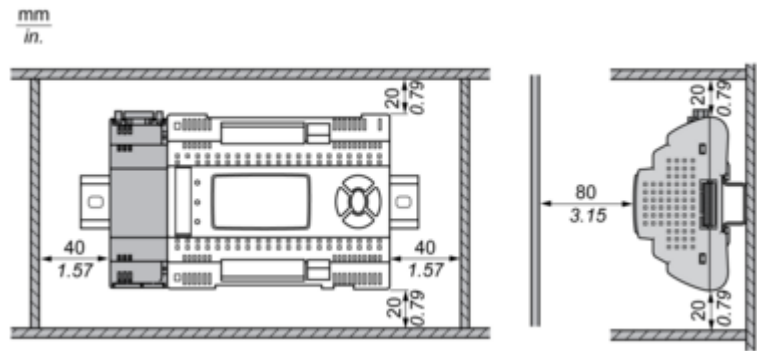
Dimensions



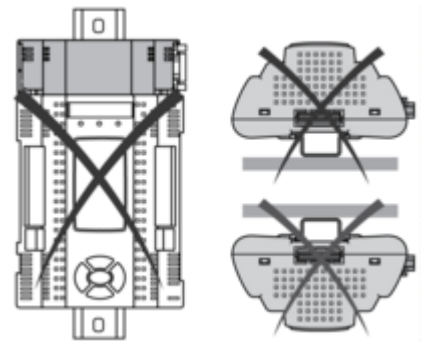
Mounting and Clearance

Mounting and Clearance

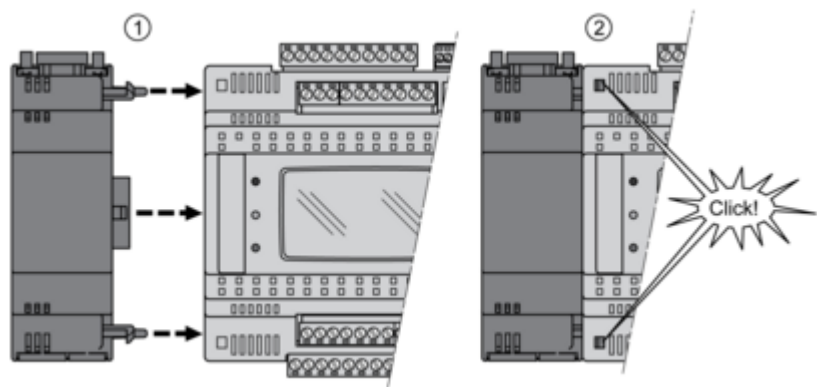
Clearance



Misplacement

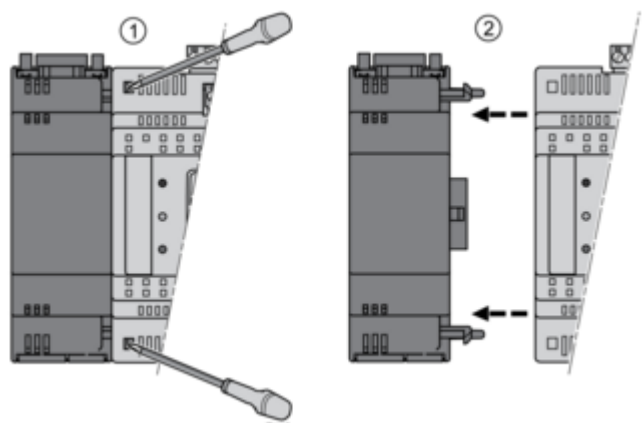


Mounting on Controller



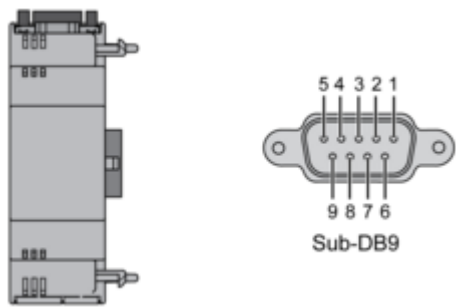
Dismounting

---



Connections and Schema

Profibus port (Profibus DP)



N°	Profibus
1	Shield
2	Output ground 24 V
3	RXD-TXD +
4	Repeater Control Signal TRS
5	Ground 0 V
6	5 V
7	24 V
8	RXD-TXD-
9	Control Signal direction

\*Shield: To be connected externally to the protective earth