

Product datasheet

Specifications



Modicon M171 Performance Plug-in RS232 with relay

TM171ARS232

Main

Range of product	Modicon M171
product or component type	Communication module
Communication port protocol	RS232 Modbus RTU and ASCII

Complementary

Integrated connection type	RS232 wire crimp - twisted pair
Adjustment	Pitch 5 mm
Electrical connection	: 3 removable screw terminal block
Physical interface	90° insertion - 2.5 mm² cable DB9 connector
Supply	Via base board TM171P/TM172
Product compatibility	Logic controller M171 performance Logic controller M172 performance
net weight	0.077 kg

Environment

Product certifications	CSA EAC CE cURus
marking	CE
IP degree of protection	IP20
Ambient air temperature for operation	-10...55 °C
Ambient air temperature for storage	-20...85 °C
Relative humidity	10...90 % without condensation

Packing Units

Unit Type of Package 1	PCE
Number of Units in Package 1	1
Package 1 Height	13.0 cm
Package 1 Width	9.1 cm
Package 1 Length	18.5 cm
Package 1 Weight	181.0 g
Unit Type of Package 2	S02

Disclaimer: This documentation is not intended as a substitute for and is not to be used for determining suitability or reliability of these products for specific user applications

Number of Units in Package 2	6
Package 2 Height	15.0 cm
Package 2 Width	30.0 cm
Package 2 Length	40.0 cm
Package 2 Weight	1.41 kg

Sustainability


Green Premium™ label is Schneider Electric's commitment to delivering products with best-in-class environmental performance. Green Premium promises compliance with the latest regulations, transparency on environmental impacts, as well as circular and low-CO₂ products.

Guide to assessing product sustainability is a white paper that clarifies global eco-label standards and how to interpret environmental declarations.


[Learn more about Green Premium >](#)


[Guide to assess a product's sustainability >](#)

Resource performance

 Upgradeable Through Digital Modules
And Upgraded Components

Well-being performance

 Mercury Free

 Rohs Exemption Information [Yes](#)

Reach Regulation [REACH Declaration](#)

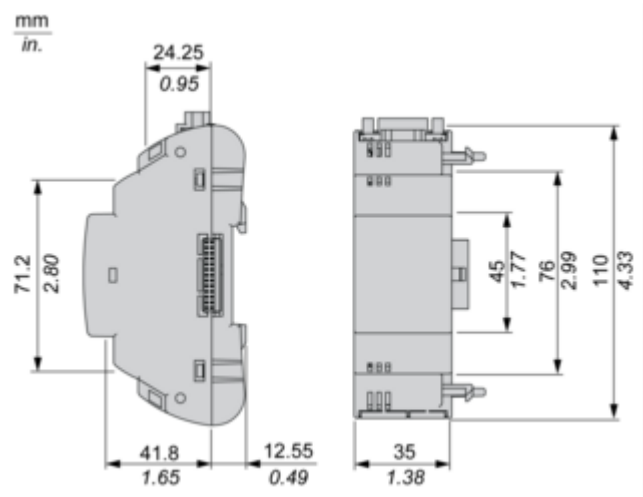
Eu Rohs Directive Pro-active compliance (Product out of EU RoHS legal scope)

China Rohs Regulation [China RoHS declaration](#)

Weee The product must be disposed on European Union markets following specific waste collection and never end up in rubbish bins

Dimensions Drawings

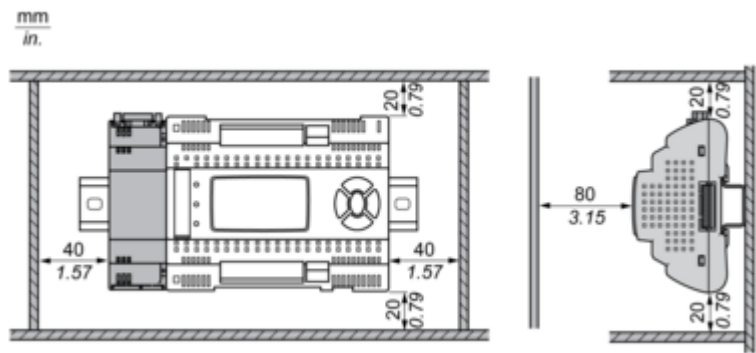
Dimensions



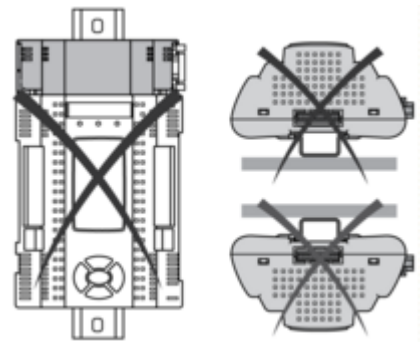
Mounting and Clearance

Mounting and Clearance

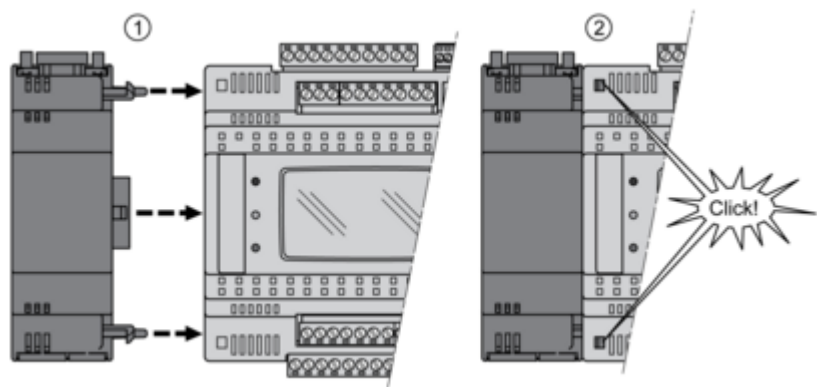
Clearance



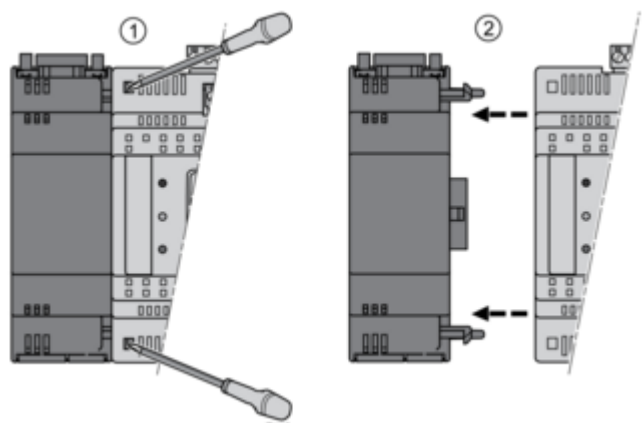
Misplacement



Mounting on Controller



Dismounting

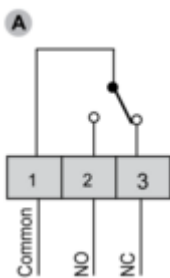
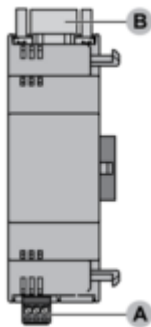


Connections and Schema

Connections and Schema

RS 232 Communication Module

TM171ARS232



NC: Normally Closed.
NO: Normally Open.

B RS 232	
N°	RS232
1	GND
2	DTR
3	TXD
4	RXD
5	DCD
6	RI
7	CTS
8	RTS
9	DSR

