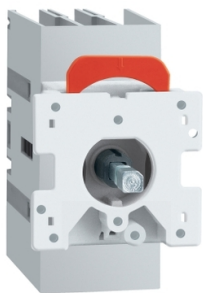


# Product datasheet

Specifications



Disconnect switch, TeSys VLS,  
body switch, 16A, 10HP at 480VAC,  
UL508, three phase, 5kA SCCR,  
size 1, door mount

VLS3P016D1

EAN Code: 3606481156518

## Main

Range	TeSys
Product Name	TeSys VARIO LS
Device Short Name	VLS3P
Product Type	Switch body

## Complementary

Mounting Support	Door
Performance Level	High performance
Number Of Poles	3P
Contact Type And Composition	3 NO
Color	Grey
[Ue] UI Rated Operational Voltage	600 V AC 50/60 Hz conforming to UL 508
Network Type	AC
Network Frequency	50/60 Hz
UI Maxium Horsepower Ratings	5 hp at 200/208 V AC 5 hp at 240 V AC 10 hp at 480 V AC 10 hp at 600 V AC 1 hp at 120 V AC 2 hp at 240 V AC
[Ue] Iec Rated Operational Voltage	690 V AC 50/60 Hz
Iec Rated Operational Power In W	7.5 kW at 400 V (AC-23A) 7.5 kW at 500 V (AC-23A) 11 kW at 690 V (AC-23A)
[Ie] Rated Operational Current	16 A Ue: 600 V conforming to UL 508 16 A AC-21A Ue: 400 V 16 A AC-21A Ue: 500 V 16 A AC-21A Ue: 690 V 16 A AC-22A Ue: 400 V 16 A AC-22A Ue: 500 V 16 A AC-22A Ue: 690 V 16 A AC-23A Ue: 400 V 16 A AC-23A Ue: 500 V 16 A AC-23A Ue: 690 V
[Ith] Conventional Free Air Thermal Current	16 A (at 55 °C)
[Ithe] Conventional Enclosed Thermal Current	16 A
Making Capacity ( I Rms)	24 A at 690 V AC-21A 48 A at 690 V AC-22A 160 A at 690 V AC-23A

Disclaimer: This documentation is not intended as a substitute for and is not to be used for determining suitability or reliability of these products for specific user applications

Breaking Capacity	24 A at 690 V (AC-21A) 48 A at 690 V (AC-22A) 128 A at 690 V (AC-23A)
Sccr	Fuse RK5 30 A maximum: 5 kA at 600 V AC
Rated Conditional Short Circuit Current	50 kA at 400 V - associated fuse 16 A gG
[Icm] Rated Short Circuit Making Capacity	1128 A at 690 V
Intermittent Duty Class	Class 120 - 60 %
[Uimp] Rated Impulse Withstand Voltage	8 kV
[Icw] Rated Short-Time Withstand Rms Current	800 A at 690 V duration: 1 s
Mechanical Durability	100000 cycles
Electrical Durability	100000 cycles AC-21A
UI Wire Size	AWG 18...AWG 6 copper
Iec Terminal Connection	Power circuit: screw clamp terminals10 mm² - solid Power circuit: screw clamp terminals16 mm² - flexible - without cable end
Tightening Torque	Power circuit: 1.8...2 N.m - on screw clamp terminals
Height	78 mm
Width	45 mm
Depth	73 mm
Product Weight	0.135 kg

## Environment

Standards	UL 508 CSA C22.2 No 14 IEC 60947-3
Product Certifications	cULus GL
Degree Of Protection	IP20 conforming to IEC 60529
Mechanical Robustness	Vibrations 2...100 Hz Fc (0.7 g) conforming to IEC 60068-2-6 Shocks 11 ms Ea (15 gn) conforming to IEC 60068-2-27
Ambient Air Temperature For Operation	-25...55 °C
Fire Resistance	960 °C conforming to IEC 60695-2-11

## Packing Units

Unit Type Of Package 1	PCE
Number Of Units In Package 1	1
Package 1 Height	8.0 cm
Package 1 Width	8.5 cm
Package 1 Length	12.0 cm
Package 1 Weight	194.0 g
Unit Type Of Package 2	S03
Number Of Units In Package 2	27
Package 2 Height	30.0 cm
Package 2 Width	30.0 cm
Package 2 Length	40.0 cm

Package 2 Weight	5.951 kg
------------------	----------

## Contractual warranty

Warranty	18 months
----------	-----------

## Sustainability





**Green Premium™ label** is Schneider Electric’s commitment to delivering products with best-in-class environmental performance. Green Premium promises compliance with the latest regulations, transparency on environmental impacts, as well as circular and low-CO<sub>2</sub> products.

**Guide to assessing product sustainability** is a white paper that clarifies global eco-label standards and how to interpret environmental declarations.

[Learn more about Green Premium >](#)

[Guide to assess a product’s sustainability >](#)

## Well-being performance

	Reach Free Of Svhc	
	Toxic Heavy Metal Free	
	Mercury Free	
	Rohs Exemption Information	Yes
Reach Regulation	REACH Declaration	
Eu Rohs Directive	Compliant EU RoHS Declaration	
China Rohs Regulation	China RoHS declaration Pro-active China RoHS declaration (out of China RoHS legal scope)	