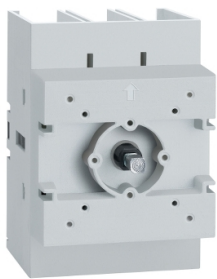


Product data sheet

Specifications



Disconnect switch, TeSys VLS,
body switch, 125A, 60HP at
480VAC, UL98, three phase, 50kA
SCCR, size 2, door mount

VLS3P125D2

Product availability: Stock - Normally stocked in distribution facility

Price*: 220.07 USD

Main

Range	TeSys
Product Name	TeSys VARIO LS
Device Short Name	VLS3P
Product Type	Switch body

Complementary

Mounting Support	Door
Performance Level	High performance
Number Of Poles	3P
Contact Type And Composition	3 NO
Color	Gray
[Ue] UI Rated Operational Voltage	600 V AC 50/60 Hz UL 508
Network Type	AC
Network Frequency	50/60 Hz
UI Maxium Horsepower Ratings	30 hp 200/208 V AC 30 hp 240 V AC 60 hp 480 V AC 60 hp 600 V AC 7.5 hp 120 V AC 10 hp 240 V AC
[Ue] Iec Rated Operational Voltage	690 V AC 50/60 Hz
Iec Rated Operational Power In W	55 kW 400 V AC-23A) 45 kW 500 V AC-23A) 45 kW 690 V AC-23A)
[Ie] Rated Operational Current	100 A Ue: 600 V UL98 125 A AC-21A Ue: 400 V 125 A AC-21A Ue: 500 V 125 A AC-21A Ue: 690 V 125 A AC-22A Ue: 400 V 125 A AC-22A Ue: 500 V 125 A AC-22A Ue: 690 V 125 A AC-23A Ue: 400 V 100 A AC-23A Ue: 500 V 47 A AC-23A Ue: 690 V
[Ith] Conventional Free Air Thermal Current	125 A (at 131 °F (55 °C))
[Ithe] Conventional Enclosed Thermal Current	100 A

Price is "List Price" and may be subject to a trade discount – check with your local distributor or retailer for actual price.

Disclaimer: This documentation is not intended as a substitute for and is not to be used for determining suitability or reliability of these products for specific user applications

Making Capacity (I Rms)	1250 A 690 V AC-23A 187.5 A 690 V AC-21A 375 A 690 V AC-22A
Breaking Capacity	187.5 A 690 V AC-21A) 375 A 690 V AC-22A) 1000 A 690 V AC-23A)
Sccr	Fuse J 100 A maximum: 50 kA at 600 V AC
Rated Conditional Short Circuit Current	50 kA 400 V 125 A gG
[Icm] Rated Short Circuit Making Capacity	3550 A 690 V
Intermittent Duty Class	Class 120 - 60 %
[Uimp] Rated Impulse Withstand Voltage	8 kV
[Icw] Rated Short-Time Withstand Rms Current	2500 A 690 V 1 s
Mechanical Durability	30000 cycles
Electrical Durability	30000 cycles AC-21
UI Wire Size	AWG 12...AWG 1 copper
Iec Terminal Connection	Power circuit screw clamp terminals 0.08 in² (50 mm²) solid Power circuit screw clamp terminals 0.11 in² (70 mm²) flexible - without cable end
Tightening Torque	Power circuit 44.25...53.10 lbf.in (5...6 N.m) screw clamp terminals
Height	2.76 in (70 mm)
Width	2.76 in (70 mm)
Depth	3.94 in (100 mm)
Product Weight	0.80 lb(US) (0.365 kg)

Environment

Standards	UL98 CSA C22.2 No 4 IEC 60947-3
Product Certifications	cULus GL
Degree Of Protection	IP20 conforming to IEC 60529
Mechanical Robustness	Vibrations 2...100 Hz Fc 0.7 g) IEC 60068-2-6 Shocks 11 ms Ea 15 gn) IEC 60068-2-27
Ambient Air Temperature For Operation	-13...131 °F (-25...55 °C)
Fire Resistance	1760 °F (960 °C) IEC 60695-2-11

Ordering and shipping details

Category	US10CP121734
Discount Schedule	0CP1
Gtin	3606481156587
Returnability	No
Country Of Origin	IT

Packing Units

Unit Type Of Package 1	PCE
Number Of Units In Package 1	1

Package 1 Height	5.00 in (12.7 cm)
Package 1 Width	3.50 in (8.89 cm)
Package 1 Length	3.50 in (8.89 cm)
Package 1 Weight	0.97 lb(US) (0.44 kg)
Unit Type Of Package 2	S03
Number Of Units In Package 2	27
Package 2 Height	11.81 in (30 cm)
Package 2 Width	11.81 in (30 cm)
Package 2 Length	15.75 in (40 cm)
Package 2 Weight	27.58 lb(US) (12.512 kg)

Sustainability

Green Premium™ label is Schneider Electric's commitment to delivering products with best-in-class environmental performance. Green Premium promises compliance with the latest regulations, transparency on environmental impacts, as well as circular and low-CO₂ products.

Guide to assessing product sustainability is a white paper that clarifies global eco-label standards and how to interpret environmental declarations.

[Learn more about Green Premium >](#)

[Guide to assess a product's sustainability >](#)

Well-being performance

✓	Reach Free Of Svhc	
✓	Toxic Heavy Metal Free	
✓	Mercury Free	
✓	Rohs Exemption Information	Yes
Reach Regulation		REACH Declaration
Eu Rohs Directive		Compliant EU RoHS Declaration
China Rohs Regulation		China RoHS declaration Pro-active China RoHS declaration (out of China RoHS legal scope)