

Product data sheet

Specifications

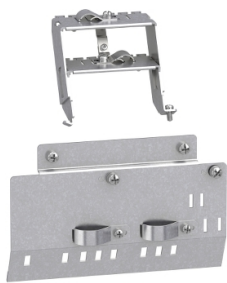


plate for EMC mounting, Altivar Machine ATV340, for variable speed drive size 3

VW3A4432

Product availability: Stock - Normally stocked in distribution facility

Price*: 105.93 USD

Main

Range of Product	Altivar Machine ATV340
accessory / separate part type	Mounting plate
Accessory / separate part category	Mounting and fixing accessory
Product compatibility	ATV340 variable speed drive 11 kW ATV340 variable speed drive 15 kW ATV340 variable speed drive 18 kW ATV340 variable speed drive 22 kW
Accessory / separate part destination	Variable speed drive

Complementary

Kit composition	1 EMC plate bottom 1 EMC plate top 11 screws 6 clamps
Net Weight	0.933 lb(US) (0.423 kg)

Ordering and shipping details

Category	US1CP4B22184
Discount Schedule	CP4B
GTIN	3606481154613
Returnability	Yes
Country of origin	ID

Packing Units

Unit Type of Package 1	PCE
Number of Units in Package 1	1
Package 1 Height	2.8 in (7.1 cm)
Package 1 Width	6.7 in (17.0 cm)
Package 1 Length	9.3 in (23.5 cm)
Package 1 Weight	20.4 oz (577.0 g)
Unit Type of Package 2	S03
Number of Units in Package 2	7
Package 2 Height	11.8 in (30.0 cm)

Price is "List Price" and may be subject to a trade discount – check with your local distributor or retailer for actual price.

Disclaimer: This documentation is not intended as a substitute for and is not to be used for determining suitability or reliability of these products for specific user applications

Package 2 Width	11.8 in (30.0 cm)
Package 2 Length	15.7 in (40.0 cm)
Package 2 Weight	10.540 lb(US) (4.781 kg)

Sustainability



Green Premium™ label is Schneider Electric's commitment to delivering products with best-in-class environmental performance. Green Premium promises compliance with the latest regulations, transparency on environmental impacts, as well as circular and low-CO₂ products.

Guide to assessing product sustainability is a white paper that clarifies global eco-label standards and how to interpret environmental declarations.

[Learn more about Green Premium >](#)

[Guide to assess a product's sustainability >](#)

Well-being performance

 Reach Free Of Svhc	
 Rohs Exemption Information	Yes
Reach Regulation	REACH Declaration
Eu Rohs Directive	Pro-active compliance (Product out of EU RoHS legal scope)
China Rohs Regulation	China RoHS declaration
California Proposition 65	"WARNING: This product can expose you to chemicals including: Lead and lead compounds, which is known to the State of California to cause cancer and birth defects or other reproductive harm. For more information go to www.P65Warnings.ca.gov "