

Product data sheet

Specifications



EMC radio interference input filter, for variable speed drive, 200A

VW3A4708

Product availability: Non-Stock - Not normally stocked in
distribution facility

Price*: 1,800.00 USD

Main

Range of Product	Altivar
Product or Component Type	EMC input filter
Range Compatibility	Altivar Process ATV900 Altivar Machine ATV340 Altivar Process ATV600
Product compatibility	Variable speed drive ATV630 wall mount, 75 kW, 380...480 V Variable speed drive ATV630 wall mount, 90 kW, 380...480 V Variable speed drive ATV630 wall mount, 45 kW, 200...240 V Variable speed drive ATV650 wall mount, 75 kW, 380...480 V Variable speed drive ATV650 wall mount, 90 kW, 380...480 V Variable speed drive ATV930 wall mount, 75 kW, 380...480 V Variable speed drive ATV930 wall mount, 90 kW, 380...480 V Variable speed drive ATV930 wall mount, 45 kW, 200...240 V Variable speed drive ATV950 wall mount, 75 kW, 380...480 V Variable speed drive ATV950 wall mount, 90 kW, 380...480 V Variable speed drive ATV34055 kW, 380...480 V Variable speed drive ATV34075 kW, 380...480 V
Product Specific Application	Radio interference input filter
mounting location	At variable speed drive side
Line Rated Current	200 A
Thermal losses	32.5 W
Phase	Three phase

Complementary

Electrical connection	Terminal 150 mm² 300 kcmil
Maximum motor cable length	492.1 ft (150 m) shielded motor cable 4 kHz IEC 61800-3 category C2, 380...480 V 984.3 ft (300 m) shielded motor cable 4 kHz IEC 61800-3 category C3, 380...480 V 492.1 ft (150 m) shielded motor cable 4 kHz IEC 61800-3 category C2, 200...240 V 984.3 ft (300 m) shielded motor cable 4 kHz IEC 61800-3 category C3, 200...240 V 164.04 ft (50 m) shielded motor cable 4 kHz IEC 61800-3 category C1, 200...240 V 164.04 ft (50 m) shielded motor cable 4 kHz IEC 61800-3 category C1, 380...480 V
maximum earth leakage current	13.9 mA 400 V 50 Hz TN 13.9 mA 400 V 50 Hz TT
power supply voltage	380...480 V 200...240 V
Tolerance	10 %
Mechanical robustness	Shocks class 3M4 IEC 60721-3-3 Vibrations class 3M4 IEC 60721-3-3
Width	7.9 in (200 mm)
Height	17.5 in (445 mm)
Depth	12.6 in (320 mm)

Price is "List Price" and may be subject to a trade discount – check with your local distributor or retailer for actual price.

Disclaimer: This documentation is not intended as a substitute for and is not to be used for determining suitability or reliability of these products for specific user applications

Net Weight	20.9 lb(US) (9.5 kg)
------------	----------------------

Environment

IP degree of protection	IP20mounting side by side IP21with kit VW3A47908
Relative humidity	5...95 % without condensation IEC 61800-5-1
Ambient air temperature for operation	14...122 °F (-10...50 °C) without current derating) 122...140 °F (50...60 °C) with current derating 1.5 % per °C)
Ambient Air Temperature for Storage	-40...158 °F (-40...70 °C)
Operating altitude	0...3280.84 ft (0...1000 m) without current derating 3280.84...13123.36 ft (1000...4000 m) with current derating 1 % per 100 m
Standards	IEC 61800-3

Ordering and shipping details

Category	US1CP4B22184
Discount Schedule	CP4B
GTIN	3606480736575
Returnability	No
Country of origin	CN

Packing Units

Unit Type of Package 1	PCE
Number of Units in Package 1	1
Package 1 Height	11.024 in (28.000 cm)
Package 1 Width	20.866 in (53.000 cm)
Package 1 Length	14.961 in (38.000 cm)
Package 1 Weight	41.335 lb(US) (18.749 kg)
Unit Type of Package 2	P06
Number of Units in Package 2	4
Package 2 Height	29.528 in (75.000 cm)
Package 2 Width	23.622 in (60.000 cm)
Package 2 Length	31.496 in (80.000 cm)
Package 2 Weight	184.077 lb(US) (83.496 kg)

Sustainability





Green Premium™ label is Schneider Electric's commitment to delivering products with best-in-class environmental performance. Green Premium promises compliance with the latest regulations, transparency on environmental impacts, as well as circular and low-CO₂ products.

Guide to assessing product sustainability is a white paper that clarifies global eco-label standards and how to interpret environmental declarations.

[Learn more about Green Premium >](#)

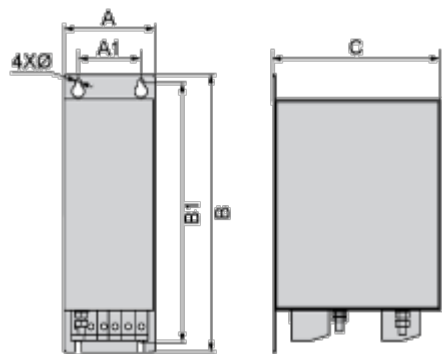
[Guide to assess a product's sustainability >](#)

Well-being performance

	Reach Free Of Svhc	
	Toxic Heavy Metal Free	
	Mercury Free	
	Rohs Exemption Information	Yes
Reach Regulation		REACH Declaration
Eu Rohs Directive		Pro-active compliance (Product out of EU RoHS legal scope) EU RoHS Declaration
China Rohs Regulation		China RoHS declaration
California Proposition 65		WARNING: This product can expose you to chemicals including: Lead and lead compounds, which is known to the State of California to cause cancer and birth defects or other reproductive harm. For more information go to www.P65Warnings.ca.gov

Dimensions Drawings

Dimensions



Dimensions in mm

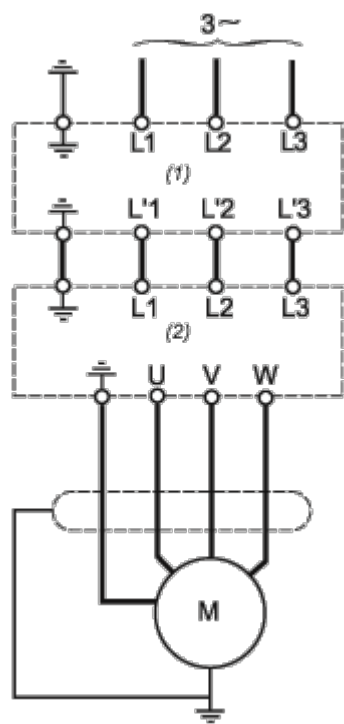
A	B	C	A1	B1	Ø
200	445	320	140	415	11

Dimensions in in.

A	B	C	A1	B1	Ø
7.9	17.5	12.6	5.5	16.3	0.43

Connections and Schema

Recommended Schema



- (1) Filter
- (2) Drive