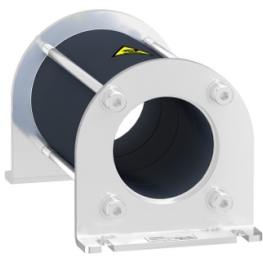


# Product datasheet

Specifications



## common mode filter for bearing current reduction - 146.4 $\mu$ H

VW3A5501

### Main

|                           |  |
|---------------------------|--|
| product or component type | Common mode output filter  |
| Range compatibility       | Altivar Process ATV900<br>Altivar Process ATV600   |
| Value of inductance       | 146.4 $\mu$ H  |
| Product compatibility     | Variable speed drive ATV630 wall mount, 0.75...11 kW, 380...480 V<br>Variable speed drive ATV650 wall mount, 0.75...11 kW, 380...480 V<br>Variable speed drive ATV930 wall mount, 0.75...11 kW, 380...480 V<br>Variable speed drive ATV950 wall mount, 0.75...11 kW, 380...480 V<br>Variable speed drive ATV630 wall mount, 0.75...5.5 kW, 200...240 V<br>Variable speed drive ATV930 wall mount, 0.75...5.5 kW, 200...240 V |

### Complementary

|                             |   |
|-----------------------------|---|
| Maximum motor cable length  | 150 m(unshielded cable) motor: 0.75...11 kW 380...480 V, with 1 filter<br>150 m(shielded cable) motor: 0.75...4 kW 380...480 V, with 1 filter<br>300 m(shielded cable) motor: 5.5...11 kW 380...480 V, with 2 filter<br>500 m(unshielded cable) motor: 0.75...4 kW 380...480 V, with 2 filter<br>500 m(unshielded cable) motor: 5.5...11 kW 380...480 V, with 1 filter + VW3A5501<br>500 m(shielded cable) motor: 0.75...4 kW 380...480 V, with 2 filter<br>1000 m(unshielded cable) motor: 0.75...5.5 kW 380...480 V, with 1 filter + VW3A5501<br>150 m(unshielded cable) motor: 0.75...5.5 kW 200...240 V, with 1 filter<br>150 m(shielded cable) motor: 0.75...4 kW 200...240 V, with 1 filter<br>300 m(shielded cable) motor: 5.5 kW 200...240 V, with 2 filter<br>500 m(unshielded cable) motor: 0.75...4 kW 200...240 V, with 2 filter<br>500 m(unshielded cable) motor: 5.5 kW 200...240 V, with 1 filter + VW3A5502<br>500 m(shielded cable) motor: 0.75...4 kW 200...240 V, with 2 filter<br>1000 m(unshielded cable) motor: 0.75...4 kW 200...240 V, with 1 filter + VW3A5501 |
| Saturation current          | 1.1 A   |
| internal diameter           | 37.1 mm for 3-phase cable inside<br>37.1 mm for PE cable outside  |
| Electrical insulation class | Class I   |
| Mechanical robustness       | Shocks class 3M4 conforming to IEC 60721-3-3<br>Vibrations class 3M4 conforming to IEC 60721-3-3  |
| switching frequency         | <= 10 kHz   |
| Maximum output frequency    | 100 Hz  |
| Height                      | 119.2 mm  |
| Width                       | 66 mm   |
| Depth                       | 66 mm   |
| net weight                  | 0.44 kg   |

### Environment

|                   |                               |
|-------------------|-------------------------------|
| Relative humidity | 5...95 % without condensation |
|-------------------|-------------------------------|

Disclaimer: This documentation is not intended as a substitute for and is not to be used for determining suitability or reliability of these products for specific user applications

|                                       |             |
|---------------------------------------|-------------|
| ambient air temperature for operation | -15...60 °C |
| ambient air temperature for storage   | -40...70 °C |

## Packing Units

|                              |           |
|------------------------------|-----------|
| Unit Type of Package 1       | PCE       |
| Number of Units in Package 1 | 1         |
| Package 1 Height             | 10.000 cm |
| Package 1 Width              | 22.000 cm |
| Package 1 Length             | 11.500 cm |
| Package 1 Weight             | 648.000 g |
| Unit Type of Package 2       | P06       |
| Number of Units in Package 2 | 75        |
| Package 2 Height             | 75.000 cm |
| Package 2 Width              | 60.000 cm |
| Package 2 Length             | 80.000 cm |
| Package 2 Weight             | 59.656 kg |

## Sustainability

**Green Premium™ label** is Schneider Electric's commitment to delivering products with best-in-class environmental performance. Green Premium promises compliance with the latest regulations, transparency on environmental impacts, as well as circular and low-CO<sub>2</sub> products.

**Guide to assessing product sustainability** is a white paper that clarifies global eco-label standards and how to interpret environmental declarations.

[Learn more about Green Premium >](#)

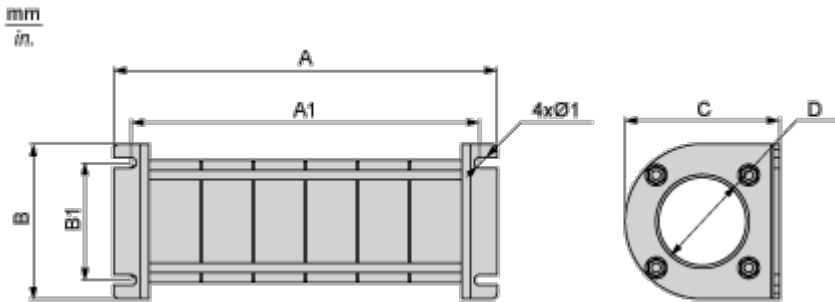
[Guide to assess a product's sustainability >](#)

## Well-being performance

|                       |                            |   |
|-----------------------|----------------------------|---|
| ✓                     | Reach Free Of Svhc         |   |
| ✓                     | Toxic Heavy Metal Free     |   |
| ✓                     | Mercury Free               |   |
| ✓                     | Rohs Exemption Information | Yes   |
|                       |                            |   |
| Reach Regulation      |                            | <a href="#">REACH Declaration</a>   |
|                       |                            |   |
| Eu Rohs Directive     |                            | Pro-active compliance (Product out of EU RoHS legal scope)<br><a href="#">EU RoHS Declaration</a> |
|                       |                            |   |
| China Rohs Regulation |                            | <a href="#">China RoHS declaration</a>  |

Dimensions Drawings

Dimensions



Dimensions in mm

| A     | B  | A1    | B1 | Ø1  | C  | D    |
|-------|----|-------|----|-----|----|------|
| 119.2 | 66 | 104.2 | 50 | 4.5 | 66 | 37.1 |

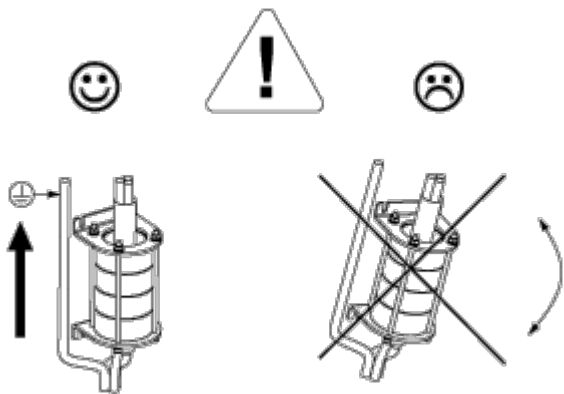
Dimensions in in.

| A   | B   | A1  | B1  | Ø1   | C   | D   |
|-----|-----|-----|-----|------|-----|-----|
| 4.7 | 2.6 | 4.1 | 2.0 | 0.18 | 2.6 | 1.5 |

Mounting and Clearance

Mounting Recommendations

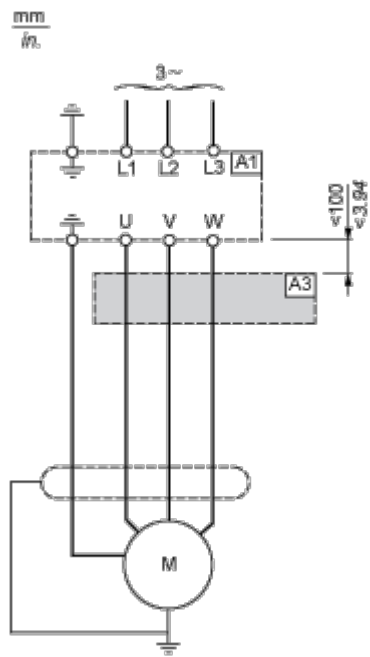
---



Connections and Schema

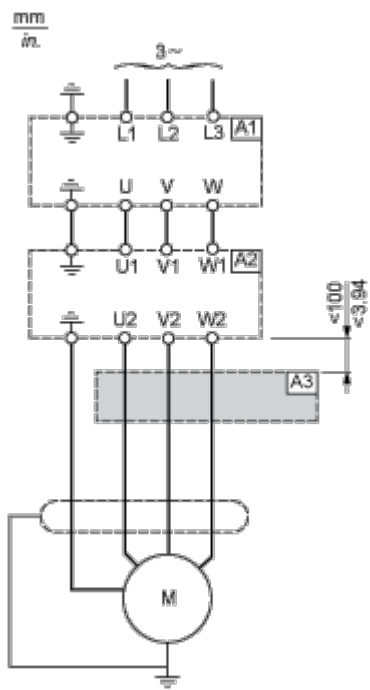
Recommended Schema

Connection at the Output Terminals of the Drive



- A1 : Drive
- A3 : Common mode filter

Connection at the Output Terminals of the dv/dt Filter or Sinus Filter



- A1 : Drive
- A2 : dv/dt or sinus filter

A3 : Common mode filter