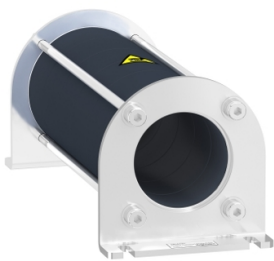


Product data sheet

Specifications



common mode filter for bearing current reduction, 219.6μH

VW3A5502

Product availability: Non-Stock - Not normally stocked in distribution facility

Price*: 590.40 USD

Main

Product or Component Type	Common mode output filter
Range Compatibility	Altivar Process ATV900 Altivar Process ATV600
Value of inductance	219.6 μH
Product compatibility	Variable speed drive ATV630 wall mount, 0.75...11 kW, 380...480 V Variable speed drive ATV650 wall mount, 0.75...11 kW, 380...480 V Variable speed drive ATV930 wall mount, 0.75...11 kW, 380...480 V Variable speed drive ATV950 wall mount, 0.75...11 kW, 380...480 V Variable speed drive ATV630 wall mount, 0.75...5.5 kW, 200...240 V Variable speed drive ATV930 wall mount, 0.75...5.5 kW, 200...240 V

Complementary

Maximum motor cable length	492.1 ft (150 m)(shielded cable)5.5...11 kW 380...480 V 1 984.3 ft (300 m)(unshielded cable)0.75...11 kW 380...480 V 1 984.3 ft (300 m)(shielded cable)0.75...4 kW 380...480 V 1 1640.4 ft (500 m)(unshielded cable)5.5...11 kW 380...480 V 1 VW3A5501 1640.4 ft (500 m)(shielded cable)5.5...11 kW 380...480 V 2 3280.8 ft (1000 m)(unshielded cable)0.75...5.5 kW 380...480 V 1 VW3A5501 3280.8 ft (1000 m)(unshielded cable)7.5...11 kW 380...480 V 2 492.1 ft (150 m)(shielded cable)5.5 kW 200...240 V 1 984.3 ft (300 m)(unshielded cable)0.75...5.5 kW 200...240 V 1 984.3 ft (300 m)(shielded cable)0.75...4 kW 200...240 V 1 1640.4 ft (500 m)(unshielded cable)5.5 kW 200...240 V 1 VW3A5501 1640.4 ft (500 m)(shielded cable)5.5 kW 200...240 V 2 3280.8 ft (1000 m)(unshielded cable)0.75...4 kW 200...240 V 1 VW3A5501 3280.8 ft (1000 m)(unshielded cable)5.5 kW 200...240 V 2
Saturation current	1.1 A
internal diameter	1.5 in (37.1 mm) 3-phase cable inside 1.5 in (37.1 mm) PE cable outside
Electrical Insulation Class	Class I
Mechanical robustness	Shocks class 3M4 IEC 60721-3-3 Vibrations class 3M4 IEC 60721-3-3
switching frequency	<= 10 kHz
Maximum output frequency	100 Hz
Height	6.4 in (163.8 mm)
Width	2.6 in (66 mm)
Depth	2.6 in (66 mm)
Net Weight	1.46 lb(US) (0.66 kg)

Environment

Relative humidity	5...95 % without condensation
-------------------	-------------------------------

Price is "List Price" and may be subject to a trade discount – check with your local distributor or retailer for actual price.

Disclaimer: This documentation is not intended as a substitute for and is not to be used for determining suitability or reliability of these products for specific user applications

Ambient Air Temperature for Operation	5...140 °F (-15...60 °C)
Ambient Air Temperature for Storage	-40...158 °F (-40...70 °C)

Ordering and shipping details

Category	US1CP4E22276
Discount Schedule	CP4E
GTIN	3606485435770
Returnability	No
Country of origin	TH

Packing Units

Unit Type of Package 1	PCE
Number of Units in Package 1	1
Package 1 Height	3.937 in (10.000 cm)
Package 1 Width	8.661 in (22.000 cm)
Package 1 Length	4.409 in (11.200 cm)
Package 1 Weight	28.924 oz (820.000 g)
Unit Type of Package 2	P06
Number of Units in Package 2	75
Package 2 Height	29.528 in (75.000 cm)
Package 2 Width	23.622 in (60.000 cm)
Package 2 Length	31.496 in (80.000 cm)
Package 2 Weight	158.821 lb(US) (72.040 kg)

Sustainability

Green Premium™ label is Schneider Electric's commitment to delivering products with best-in-class environmental performance. Green Premium promises compliance with the latest regulations, transparency on environmental impacts, as well as circular and low-CO₂ products.

Guide to assessing product sustainability is a white paper that clarifies global eco-label standards and how to interpret environmental declarations.

[Learn more about Green Premium >](#)

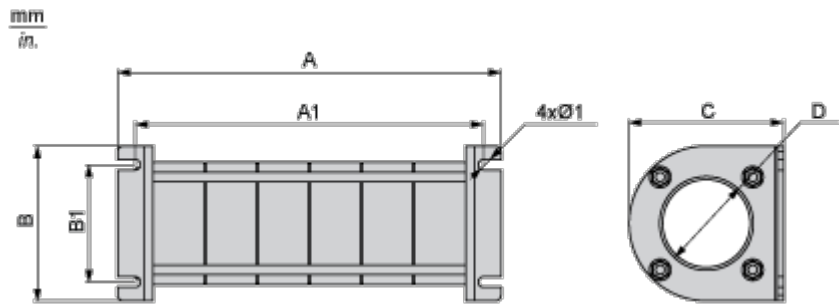
[Guide to assess a product's sustainability >](#)

Well-being performance

✓	Reach Free Of Svhc	
✓	Toxic Heavy Metal Free	
✓	Mercury Free	
✓	Rohs Exemption Information	Yes
Reach Regulation		REACH Declaration
Eu Rohs Directive		Pro-active compliance (Product out of EU RoHS legal scope) EU RoHS Declaration
China Rohs Regulation		China RoHS declaration
California Proposition 65		WARNING: This product can expose you to chemicals including: Lead and lead compounds, which is known to the State of California to cause cancer and birth defects or other reproductive harm. For more information go to www.P65Warnings.ca.gov

Dimensions Drawings

Dimensions



Dimensions in mm

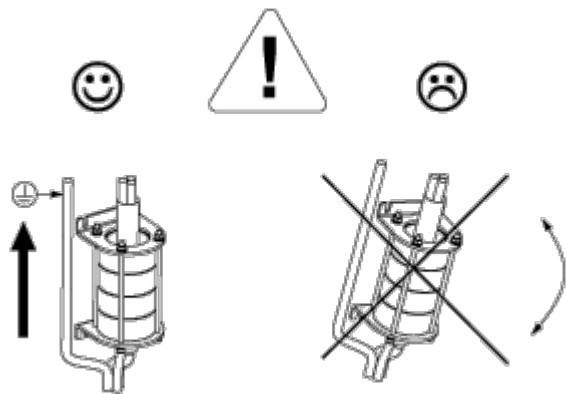
A	B	A1	B1	Ø1	C	D
163.8	66	148.8	50	4.5	66	37.1

Dimensions in in.

A	B	A1	B1	Ø1	C	D
6.4	2.6	5.9	2.0	0.18	2.6	1.5

Mounting and Clearance

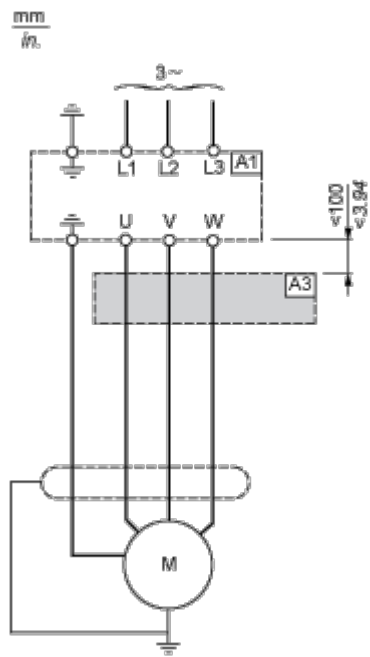
Mounting Recommendations



Connections and Schema

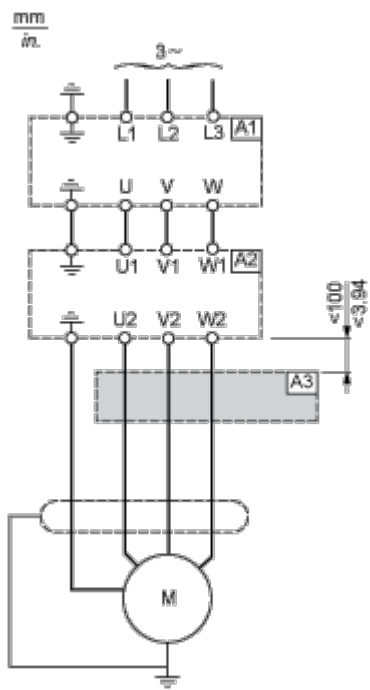
Recommended Schema

Connection at the Output Terminals of the Drive



- A1 : Drive
- A3 : Common mode filter

Connection at the Output Terminals of the dv/dt Filter or Sinus Filter



- A1 : Drive
- A2 : dv/dt or sinus filter

A3 : Common mode filter