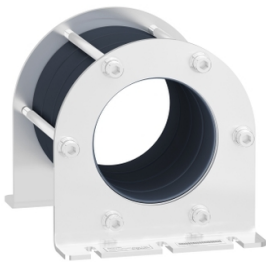


# Product data sheet

Specifications



## common mode filter for bearing current reduction, 120μH

VW3A5503

Product availability: Non-Stock - Not normally stocked in distribution facility

Price\*: 1,255.20 USD

### Main

Product or Component Type	Common mode output filter
Range Compatibility	Altivar Process ATV900 Altivar Process ATV600
Value of inductance	120 μH
Product compatibility	Variable speed drive ATV630 wall mount, 15...90 kW, 380...480 V Variable speed drive ATV650 wall mount, 15...90 kW, 380...480 V Variable speed drive ATV930 wall mount, 15...90 kW, 380...480 V Variable speed drive ATV950 wall mount, 15...90 kW, 380...480 V Variable speed drive ATV630 wall mount, 7.5...45 kW, 200...240 V Variable speed drive ATV930 wall mount, 7.5...45 kW, 200...240 V

### Complementary

Maximum motor cable length	492.1 ft (150 m)(unshielded cable)15...90 kW 380...480 V 1 492.1 ft (150 m)(shielded cable)15...22 kW 380...480 V 1 984.3 ft (300 m)(shielded cable)15...22 kW 380...480 V 2 984.3 ft (300 m)(shielded cable)30...90 kW 380...480 V 1 VW3A5504 1640.4 ft (500 m)(unshielded cable)15...22 kW 380...480 V 2 1640.4 ft (500 m)(unshielded cable)30...90 kW 380...480 V 1 VW3A5504 1640.4 ft (500 m)(shielded cable)15...22 kW 380...480 V 1 VW3A5504 3280.8 ft (1000 m)(unshielded cable)15...22 kW 380...480 V 1 VW3A5504 492.1 ft (150 m)(unshielded cable)7.5...45 kW 200...240 V 1 492.1 ft (150 m)(shielded cable)7.5...11 kW 200...240 V 1 984.3 ft (300 m)(shielded cable)7.5...11 kW 200...240 V 2 984.3 ft (300 m)(shielded cable)15...45 kW 200...240 V 1 VW3A5504 1640.4 ft (500 m)(unshielded cable)7.5...11 kW 200...240 V 2 1640.4 ft (500 m)(unshielded cable)15...45 kW 200...240 V 1 VW3A5504 1640.4 ft (500 m)(shielded cable)7.5...11 kW 200...240 V 1 VW3A5504 3280.8 ft (1000 m)(unshielded cable)7.5...11 kW 200...240 V 1 VW3A5504
Saturation current	2.2 A
internal diameter	3.0 in (76 mm) 3-phase cable inside 3.0 in (76 mm) PE cable outside
Electrical Insulation Class	Class I
Mechanical robustness	Shocks class 3M4 IEC 60721-3-3 Vibrations class 3M4 IEC 60721-3-3
switching frequency	<= 10 kHz
Maximum output frequency	100 Hz
Height	6.3 in (161 mm)
Width	5.02 in (127.5 mm)
Depth	5.02 in (127.5 mm)
Net Weight	4.83 lb(US) (2.19 kg)

### Environment

Price is "List Price" and may be subject to a trade discount – check with your local distributor or retailer for actual price.

Disclaimer: This documentation is not intended as a substitute for and is not to be used for determining suitability or reliability of these products for specific user applications

Relative humidity	5...95 % without condensation
Ambient Air Temperature for Operation	5...140 °F (-15...60 °C)
Ambient Air Temperature for Storage	-40...158 °F (-40...70 °C)

## Ordering and shipping details

Category	US1CP4E22276
Discount Schedule	CP4E
GTIN	3606485435787
Returnability	No
Country of origin	TH

## Packing Units

Unit Type of Package 1	PCE
Number of Units in Package 1	1
Package 1 Height	6.693 in (17.000 cm)
Package 1 Width	10.906 in (27.700 cm)
Package 1 Length	7.087 in (18.000 cm)
Package 1 Weight	5.675 lb(US) (2.574 kg)
Unit Type of Package 2	P06
Number of Units in Package 2	24
Package 2 Height	29.528 in (75.000 cm)
Package 2 Width	23.622 in (60.000 cm)
Package 2 Length	31.496 in (80.000 cm)
Package 2 Weight	164.853 lb(US) (74.776 kg)

## Sustainability

**Green Premium™ label** is Schneider Electric's commitment to delivering products with best-in-class environmental performance. Green Premium promises compliance with the latest regulations, transparency on environmental impacts, as well as circular and low-CO<sub>2</sub> products.

**Guide to assessing product sustainability** is a white paper that clarifies global eco-label standards and how to interpret environmental declarations.

[Learn more about Green Premium >](#)

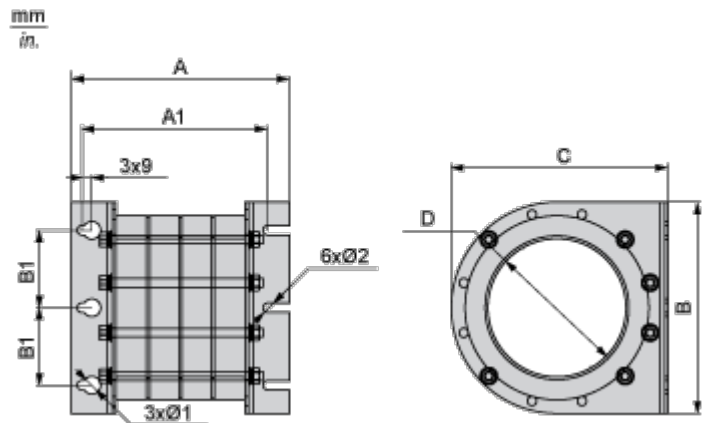
[Guide to assess a product's sustainability >](#)

## Well-being performance

✓	Reach Free Of Svhc	
✓	Toxic Heavy Metal Free	
✓	Mercury Free	
✓	Rohs Exemption Information	Yes
Reach Regulation		<a href="#">REACH Declaration</a>
Eu Rohs Directive		Pro-active compliance (Product out of EU RoHS legal scope) <a href="#">EU RoHS Declaration</a>
China Rohs Regulation		<a href="#">China RoHS declaration</a>
California Proposition 65		WARNING: This product can expose you to chemicals including: Lead and lead compounds, which is known to the State of California to cause cancer and birth defects or other reproductive harm. For more information go to <a href="http://www.P65Warnings.ca.gov">www.P65Warnings.ca.gov</a>

Dimensions Drawings

Dimensions



Dimensions in mm

A	A1	B1	Ø1	Ø2	B	C	D
160	137	45	13	6.5	127.5	127.5	75

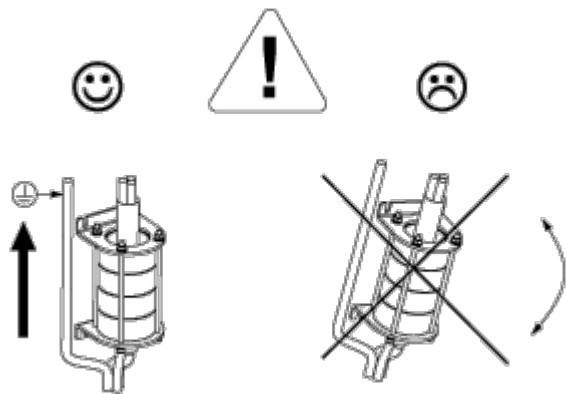
Dimensions in in.

A	A1	B1	Ø1	Ø2	B	C	D
6.3	5.1	1.8	0.5	0.26	5.0	5.0	3.0

Mounting and Clearance

Mounting Recommendations

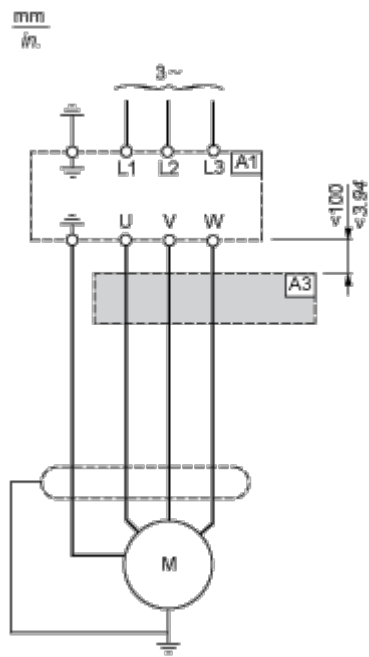
---



Connections and Schema

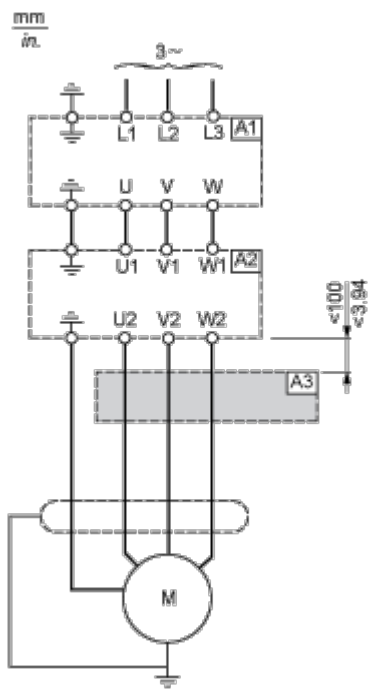
Recommended Schema

Connection at the Output Terminals of the Drive



- A1 : Drive
- A3 : Common mode filter

Connection at the Output Terminals of the dv/dt Filter or Sinus Filter



- A1 : Drive
- A2 : dv/dt or sinus filter

A3 : Common mode filter