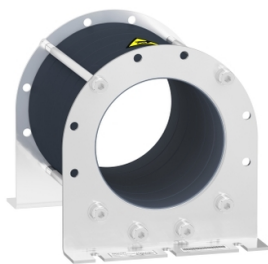


# Product datasheet

Specifications



## common mode filter for bearing current reduction - 274.8 ÂµH

VW3A5506

### Main

product or component type	Common mode output filter
Range compatibility	Altivar Process ATV600 Altivar Process ATV900
Value of inductance	274.8 µH
Product compatibility	Variable speed drive ATV630 wall mount, 110...160 kW, 380...480 V Variable speed drive ATV650 wall mount, 110...160 kW, 380...480 V Variable speed drive ATV930 wall mount, 110...160 kW, 380...480 V Variable speed drive ATV950 wall mount, 110...160 kW, 380...480 V Variable speed drive ATV630 wall mount, 55...75 kW, 380...480 V Variable speed drive ATV930 wall mount, 55...75 kW, 380...480 V

### Complementary

Maximum motor cable length	150 m(shielded cable) motor: 130...160 kW 380...480 V, with 1 filter 300 m(unshielded cable) motor: 110...160 kW 380...480 V, with 1 filter 300 m(shielded cable) motor: 110 kW 380...480 V, with 1 filter 500 m(shielded cable) motor: 110 kW 380...480 V, with 1 filter + VW3A5505 500 m(shielded cable) motor: 130...160 kW 380...480 V, with 2 filter 1000 m(unshielded cable) motor: 110...160 kW 380...480 V, with 2 filter 150 m(shielded cable) motor: 75 kW 200...240 V, with 1 filter 300 m(unshielded cable) motor: 55...75 kW 200...240 V, with 1 filter 300 m(shielded cable) motor: 55 kW 200...240 V, with 1 filter 500 m(shielded cable) motor: 55 kW 200...240 V, with 1 filter + VW3A5505 500 m(shielded cable) motor: 75 kW 200...240 V, with 2 filter 1000 m(unshielded cable) motor: 55...75 kW 200...240 V, with 2 filter
Saturation current	3.6 A
internal diameter	123.9 mm for 3-phase cable inside 123.9 mm for PE cable outside
Electrical insulation class	Class I
Mechanical robustness	Shocks class 3M4 conforming to IEC 60721-3-3 Vibrations class 3M4 conforming to IEC 60721-3-3
switching frequency	<= 10 kHz
Maximum output frequency	100 Hz
Height	256 mm
Width	191 mm
Depth	196 mm
net weight	8.3 kg

### Environment

Relative humidity	5...95 % without condensation
ambient air temperature for operation	-15...60 °C
ambient air temperature for storage	-40...70 °C

Disclaimer: This documentation is not intended as a substitute for and is not to be used for determining suitability or reliability of these products for specific user applications

# Packing Units

Unit Type of Package 1	PCE
Number of Units in Package 1	1
Package 1 Height	22.500 cm
Package 1 Width	36.000 cm
Package 1 Length	26.000 cm
Package 1 Weight	8.867 kg
Unit Type of Package 2	P06
Number of Units in Package 2	6
Package 2 Height	75.000 cm
Package 2 Width	60.000 cm
Package 2 Length	80.000 cm
Package 2 Weight	66.202 kg

## Sustainability

**Green Premium™ label** is Schneider Electric's commitment to delivering products with best-in-class environmental performance. Green Premium promises compliance with the latest regulations, transparency on environmental impacts, as well as circular and low-CO<sub>2</sub> products.

**Guide to assessing product sustainability** is a white paper that clarifies global eco-label standards and how to interpret environmental declarations.

[Learn more about Green Premium >](#)

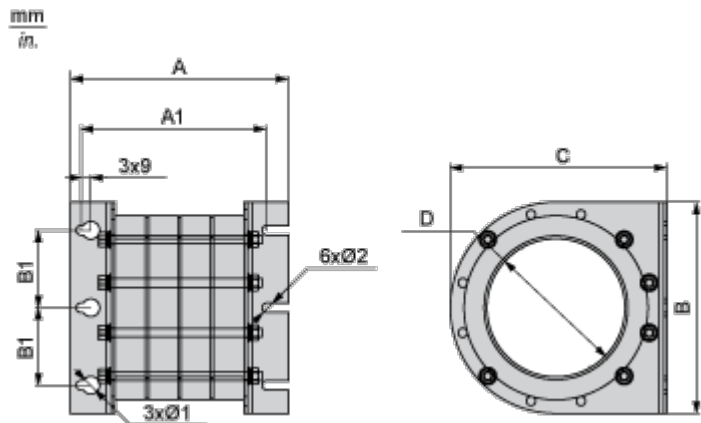
[Guide to assess a product's sustainability >](#)

## Well-being performance

✓	Reach Free Of Svhc	
✓	Toxic Heavy Metal Free	
✓	Mercury Free	
✓	Rohs Exemption Information	Yes
Reach Regulation	REACH Declaration	
Eu Rohs Directive	Pro-active compliance (Product out of EU RoHS legal scope) EU RoHS Declaration	
China Rohs Regulation	China RoHS declaration	

Dimensions Drawings

Dimensions



Dimensions in mm

A	A1	B1	Ø1	Ø2	B	C	D
255.8	226.4	70	16	8.5	191	196	123.9

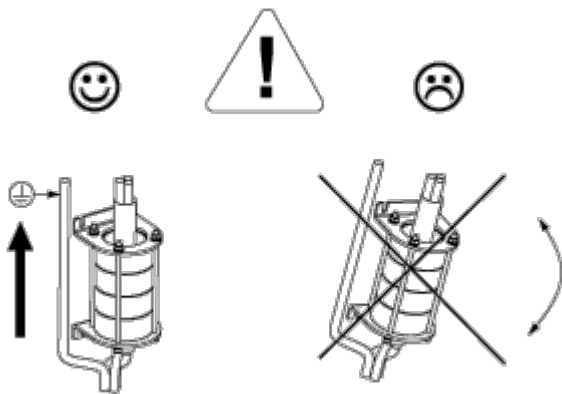
Dimensions in in.

A	A1	B1	Ø1	Ø2	B	C	D
10.1	8.5	2.8	0.6	0.33	7.5	7.7	4.9

Mounting and Clearance

Mounting Recommendations

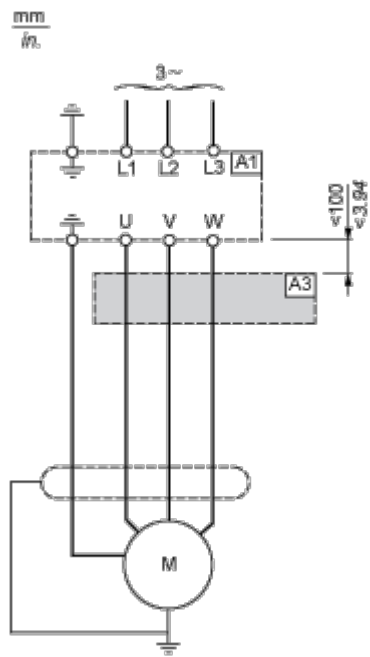
---



Connections and Schema

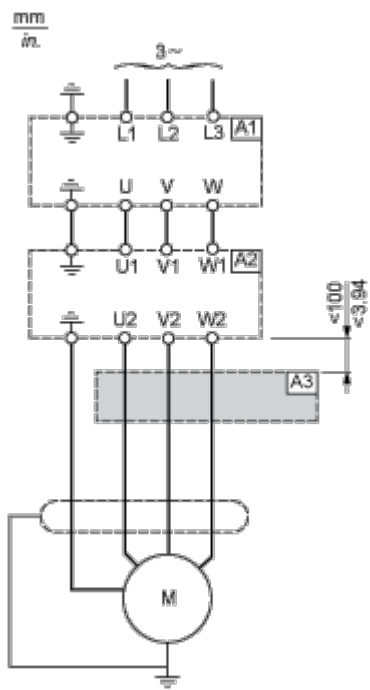
Recommended Schema

Connection at the Output Terminals of the Drive



- A1 : Drive
- A3 : Common mode filter

Connection at the Output Terminals of the dv/dt Filter or Sinus Filter



- A1 : Drive
- A2 : dv/dt or sinus filter

A3 : Common mode filter