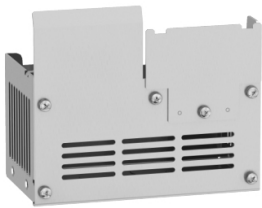


Product data sheet

Specifications



kit for UL type 1 conformity, Altivar machine ATV320, mounted under variable speed drive ATV320 S3C

VW3A95814

Main

Range of product	Altivar
Accessory / separate part categor	Mounting and fixing accessories
accessory / separate part type	Kit for UL type 1 conformity
Product compatibility	Variable speed drive ATV320...C 2.2 kW, 380...500 V, three phase Variable speed drive ATV320...C 3 kW, 380...500 V, three phase Variable speed drive ATV320...C 4 kW, 380...500 V, three phase Variable speed drive ATV320...C 2.2 kW, 525...600 V, three phase Variable speed drive ATV320...C 4 kW, 525...600 V, three phase
Accessory / separate part destination	Variable speed drive

Complementary

Range compatibility	Altivar Machine ATV320
Kit composition	Mechanical device
mounting location	Underside of drive

Environment

Standards	UL Type 1
-----------	-----------

Packing Units

Unit Type of Package 1	PCE
Number of Units in Package 1	1
Package 1 Height	7.087 in (18.000 cm)
Package 1 Width	7.283 in (18.500 cm)
Package 1 Length	7.283 in (18.500 cm)
Package 1 Weight	31.252 oz (886.000 g)
Unit Type of Package 2	P06
Number of Units in Package 2	30
Package 2 Height	29.528 in (75.000 cm)
Package 2 Width	23.622 in (60.000 cm)
Package 2 Length	31.496 in (80.000 cm)
Package 2 Weight	84.878 lb(US) (38.500 kg)

Disclaimer: This documentation is not intended as a substitute for and is not to be used for determining suitability or reliability of these products for specific user applications

Sustainability

Green Premium™ label is Schneider Electric’s commitment to delivering products with best-in-class environmental performance. Green Premium promises compliance with the latest regulations, transparency on environmental impacts, as well as circular and low-CO₂ products.


Guide to assessing product sustainability is a white paper that clarifies global eco-label standards and how to interpret environmental declarations.

[Learn more about Green Premium >](#)

[Guide to assess a product’s sustainability >](#)

Well-being performance

 Reach Free Of Svhc

 Rohs Exemption Information [Yes](#)

Reach Regulation [REACH Declaration](#)

Eu Rohs Directive Pro-active compliance (Product out of EU RoHS legal scope)

China Rohs Regulation [China RoHS declaration](#)