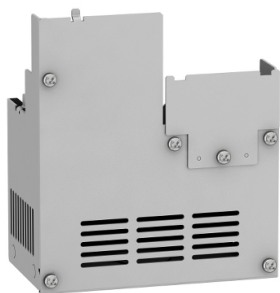


Product datasheet

Specifications



kit for UL type 1 conformity, Altivar machine ATV320, mounted under variable speed drive ATV320 S4C

VW3A95816

Main

Range of product	Altivar
Accessory / separate part categor	Mounting and fixing accessories
accessory / separate part type	Kit for UL type 1 conformity
Product compatibility	Variable speed drive ATV320...C at 5.5 kW, 200...240 V, three phase Variable speed drive ATV320...C at 7.5 kW, 200...240 V, three phase Variable speed drive ATV320...C at 5.5 kW, 525...600 V, three phase Variable speed drive ATV320...C at 7.5 kW, 525...600 V, three phase
Accessory / separate part destination	Variable speed drive

Complementary

Range compatibility	Altivar Machine ATV320
Kit composition	Mechanical device
mounting location	Underside of drive

Environment

Standards	UL Type 1
-----------	-----------

Packing Units

Unit Type of Package 1	PCE
Number of Units in Package 1	1
Package 1 Height	24.5 cm
Package 1 Width	19.1 cm
Package 1 Length	26.5 cm
Package 1 Weight	1.3 kg

Disclaimer: This documentation is not intended as a substitute for and is not to be used for determining suitability or reliability of these products for specific user applications

Sustainability



Green Premium™ label is Schneider Electric’s commitment to delivering products with best-in-class environmental performance. Green Premium promises compliance with the latest regulations, transparency on environmental impacts, as well as circular and low-CO₂ products.

Guide to assessing product sustainability is a white paper that clarifies global eco-label standards and how to interpret environmental declarations.

[Learn more about Green Premium >](#)

[Guide to assess a product’s sustainability >](#)

Well-being performance

 Reach Free Of Svhc	
 Rohs Exemption Information	Yes
Reach Regulation	REACH Declaration
Eu Rohs Directive	Pro-active compliance (Product out of EU RoHS legal scope)
China Rohs Regulation	China RoHS declaration