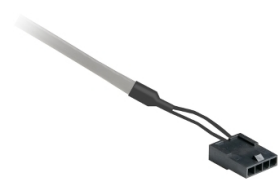


# Product data sheet

Specifications



## LXM28 STO connection cable 2m

VW3M1C20R20

Product availability: Stock - Normally stocked in distribution facility

Price\*: 18.00 USD

### Main

Range of Product	Lexium 28
Product or Component Type	Safe torque off cable
accessory / separate part type	Preassembled STO cordset
accessory / separate part category	Connection accessory
Product compatibility	Servo drive LXM28
accessory / separate part destination	Between servo drive and logic controller
Range Compatibility	Lexium 28
Cable length	6.6 ft (2 m)

### Complementary

Electrical connection	Connector - Molex 4-pin servo drive side Free end CN9 interface
Net Weight	0.4 lb(US) (0.2 kg)

### Ordering and shipping details

Category	US1PC5118264
Discount Schedule	PC51
GTIN	3606480736049
Returnability	Yes
Country of origin	TN

### Packing Units

Unit Type of Package 1	PCE
Number of Units in Package 1	1
Package 1 Height	0.394 in (1.000 cm)
Package 1 Width	11.220 in (28.500 cm)
Package 1 Length	11.417 in (29.000 cm)
Package 1 Weight	4.339 oz (123.000 g)
Unit Type of Package 2	S02
Number of Units in Package 2	15
Package 2 Height	5.906 in (15.000 cm)
Package 2 Width	11.811 in (30.000 cm)

Price is "List Price" and may be subject to a trade discount – check with your local distributor or retailer for actual price.

Disclaimer: This documentation is not intended as a substitute for and is not to be used for determining suitability or reliability of these products for specific user applications

Package 2 Length	15.748 in (40.000 cm)
Package 2 Weight	4.751 lb(US) (2.155 kg)

## Sustainability

**Green Premium™ label** is Schneider Electric's commitment to delivering products with best-in-class environmental performance. Green Premium promises compliance with the latest regulations, transparency on environmental impacts, as well as circular and low-CO<sub>2</sub> products.

**Guide to assessing product sustainability** is a white paper that clarifies global eco-label standards and how to interpret environmental declarations.

[Learn more about Green Premium >](#)

[Guide to assess a product's sustainability >](#)

## Well-being performance

✓	Reach Free Of Svhc	
✓	Toxic Heavy Metal Free	
✓	Mercury Free	
✓	Rohs Exemption Information	Yes
✓	Pvc Free	
Eu Rohs Directive		Pro-active compliance (Product out of EU RoHS legal scope) <a href="#">EU RoHS Declaration</a>
China Rohs Regulation		<a href="#">China RoHS declaration</a> Pro-active China RoHS declaration (out of China RoHS legal scope)
California Proposition 65		WARNING: This product can expose you to chemicals including: Lead and lead compounds, which is known to the State of California to cause cancer and birth defects or other reproductive harm. For more information go to <a href="http://www.P65Warnings.ca.gov">www.P65Warnings.ca.gov</a>