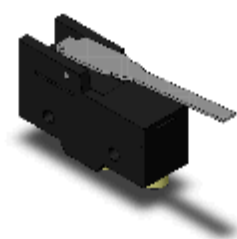


General-purpose Basic Switch

X-10GM-B

Reverse hinge lever, General load Reverse action type, SPDT (Single-Pole, Double-Throw type), Rated through current 10 A, Screw terminal (M4)



Image

Ratings / Performance

As of April 9, 2020

Actuator	Reverse hinge lever Stainless steel lever Radius of curvature: R56
Contact form	SPDT (Single-Pole, Double-Throw type) Ag
Contact gap (standard value)	0.9 mm
Terminal	Screw terminal (M4)
Load	General load
Rated current	10 A
Ratings (DC) Non-Inductive load	Resistive load: 10 A at 8 VDC, 10 A at 14 VDC, 10 A at 30 VDC, 10 A at 125 VDC, 3 A at 250 VDC Lamp load (NC): 3 A at 8 VDC, 3 A at 14 VDC, 3 A at 30 VDC, 3 A at 125 VDC, 1.5 A at 250 VDC Lamp load (NO): 1.5 A at 8 VDC, 1.5 A at 14 VDC, 1.5 A at 30 VDC, 1.5 A at 125 VDC, 0.75 A at 250 VDC Inductive load (NC): 10 A at 8 VDC, 10 A at 14 VDC, 10 A at 30 VDC, 7.5 A at 125 VDC, 2 A at 250 VDC Inductive load (NO): 10 A at 8 VDC, 10 A at 14 VDC, 10 A at 30 VDC, 6 A at 125 VDC, 1.5 A at 250 VDC Motor load (NC): 5 A at 8 VDC, 5 A at 14 VDC, 5 A at 30 VDC, 5 A at 125 VDC, 2 A at 250 VDC Motor load (NO): 2.5 A at 8 VDC, 2.5 A at 14 VDC, 2.5 A at 30 VDC, 2.5 A at 125 VDC, 1.5 A at 250 VDC
Inrush current	NC: 30 A max. NO: 15 A max.
Ambient temperature	-25 to 80 °C (with no freezing or condensation)
Ambient humidity	35 to 85% RH

Permissible operating frequency	Electrical: 20 operations / 1 minute max. Mechanical: 240 operations / 1 minute max.
Contact resistance (Initial value)	15 mΩ max.
Insulation resistance	100 MΩ min. (at 500 VDC)
Dielectric strength	Between each terminal of the same polarities: 1,500 VAC 50/60 Hz 1 min Between live-metallic part and ground: 1,500 VAC 50/60 Hz 1 min Between each terminal and non-live-metallic part: 1,500 VAC 50/60 Hz 1 min
Durability	Electrical: 100,000 operations min. Mechanical: 1,000,000 operations min.
Degree of protection	IP00
Degree of protection against electric shock	Class I
Proof tracking index(PTI)	175

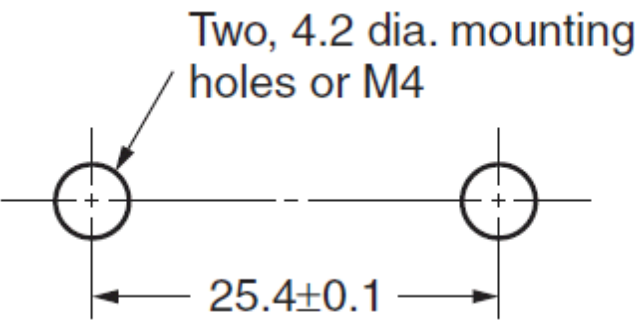
Operating Force ( OF )	Standard value 2.16 N max.
Release Force ( RF )	Standard value 0.25 N min.
Over-Travel ( OT )	Standard value 5.5 mm min.
Movement Differential ( MD )	Standard value 2.1 mm max.
Free Position ( FP )	Standard value 26.8 mm max.
Operating Position ( OP )	Standard value 20.3 to 21.9 mm

As of April 9, 2020

Mounting hole dimensions

As of April 9, 2020

Screw mounting hole dimensions



As of April 9, 2020

Terminals

As of April 9, 2020



Note: With the reverse-type models (X-10GM□), the NC and NO terminal arrangements are reversed.

As of April 9, 2020