

## Plugs on One Cable End

## XS3H

### ■ Model Number Legend

Use this model number legend to identify products from their model number. When ordering, use a model number from the table in *Ordering Information*.

**XS3H** -  42  - **4**    - **R**

1    2 3 4 5    6 7 8    9

#### 1. Fastening Method

M: M8

S: S8

#### 2. Connector Poles

4: 4 poles

#### 3. Cable Connection Direction

1: Straight

2: L-shaped

#### 4. Connections

Pin No.

1    2    3    4

4: Brown White Blue Black

#### 5. Cable Length

C3: 0.3 m

01: 1 m

#### 6. Cable Specifications

R: Vibration-proof robot cable

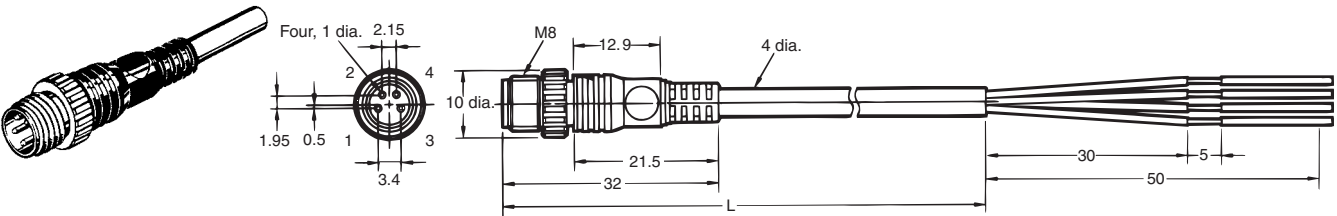
### ■ Ordering Information

Item	Cable connection direction	No. of cable cores	Cable core cross-sectional area	Cable length (m)	Model
M8 Model Vibration-proof robot cable	Straight	4	0.2 mm <sup>2</sup>	0.3	XS3H-M421-4C3-R
	L-shaped			1	XS3H-M421-401-R
				0.3	XS3H-M422-4C3-R
				1	XS3H-M422-401-R
S8 Model Vibration-proof robot cable	Straight	4		0.3	XS3H-S421-4C3-R
	L-shaped			1	XS3H-S421-401-R
				0.3	XS3H-S422-4C3-R
				1	XS3H-S422-401-R

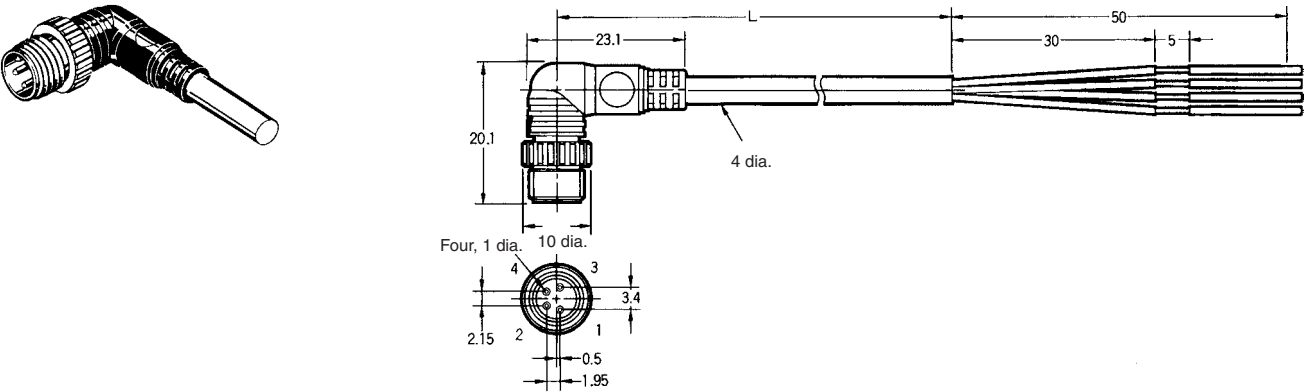
**XS3H-M42□-4□□-R M8 Screw-on Connectors with Vibration-proof Robot Cable**

**■ Dimensions**

**Straight Connectors**

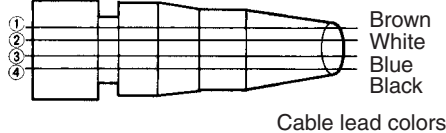


**L-shaped Connectors**



**Wiring Diagram**

Contact No.



**Mating Connectors**

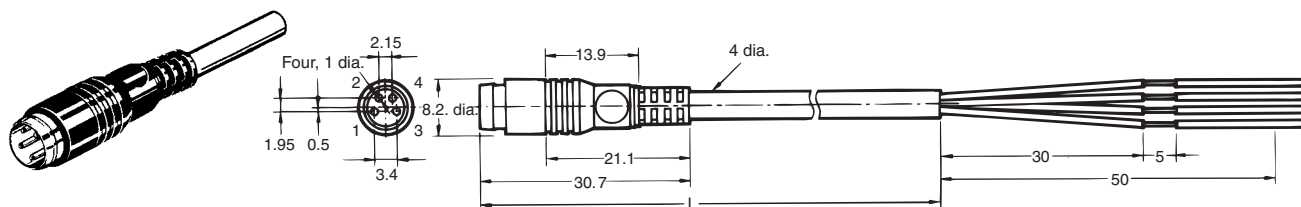
Item	Model
XS3H (M8)	XS3F (M8), XS3W (M8), XS3P (M8)

**Note:** M8 screw models and S8 snap-in models cannot be connected to each other.

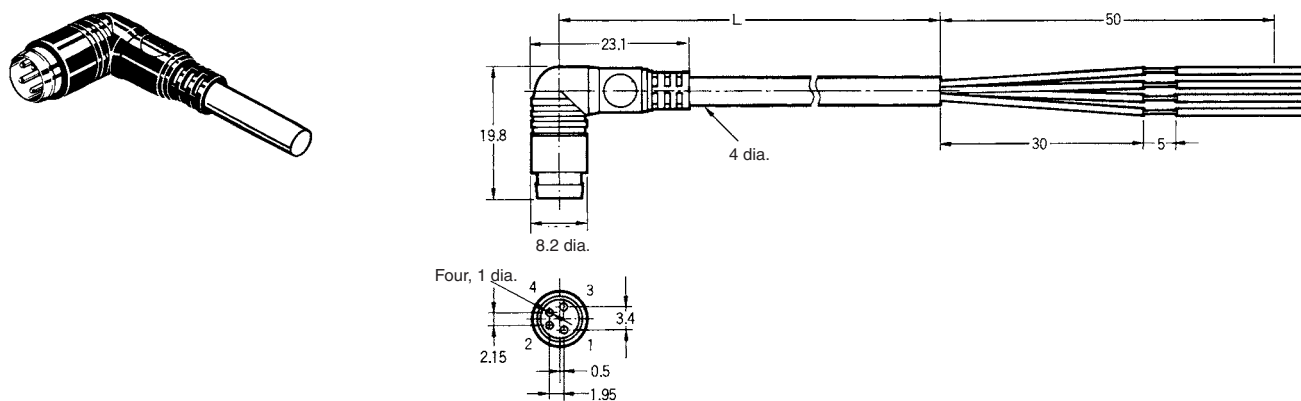
# XS3H-S42-4-R S8 Snap-in Connectors with Vibration-proof Robot Cable

## ■ Dimensions

### Straight Connectors

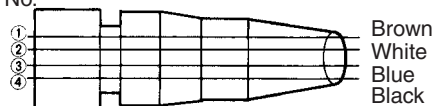


### L-shaped Connectors



### Wiring Diagram

Contact No.



Cable lead colors

## Mating Connectors

Item	Model
XS3H (S8)	XS3F (S8), XS3W (S8), XS3P (S8)

**Note:** M8 screw models and S8 snap-in models cannot be connected to each other.