

# Product datasheet

Specifications



green light block with body/fixing  
collar integral LED 24...120V

ZB5AVBG3

⚠ Discontinued on: 11-Apr-2023

⚠ Discontinued

## Main

|                               |  |
|-------------------------------|--|
| Range Of Product              | Harmony XB5  |
| Product Or Component Type     | Complete body/light block assembly   |
| Device Short Name             | ZB5  |
| Fixing Collar Material        | Plastic  |
| Sale Per Indivisible Quantity | 1  |
| Connections - Terminals       | Screw clamp terminals, $\leq 2 \times 1.5 \text{ mm}^2$ with cable end conforming to EN 60947-1<br>Screw clamp terminals, $\geq 1 \times 0.22 \text{ mm}^2$ without cable end conforming to EN 60947-1 |
| Light Source                  | Protected LED  |
| Bulb Base                     | Integral LED   |
| Light Source Colour           | Green  |

## Complementary

|  |   |
|--|---|
| Cad Overall Width                      | 30 mm   |
| Cad Overall Height                     | 42 mm   |
| Cad Overall Depth                      | 32 mm   |
| Terminals Description Iso N°1          | (X1-X2)PL   |
| Net Weight                             | 0.022 kg  |
| Tightening Torque                      | 0.8...1.2 N.m conforming to EN 60947-1  |
| Shape Of Screw Head                    | Cross compatible with Philips no 1 screwdriver<br>Cross compatible with pozidriv No 1 screwdriver<br>Slotted compatible with flat $\varnothing 4 \text{ mm}$ screwdriver<br>Slotted compatible with flat $\varnothing 5.5 \text{ mm}$ screwdriver |
| [Ui] Rated Insulation Voltage          | 600 V (pollution degree 3) conforming to EN 60947-1   |
| [Uimp] Rated Impulse Withstand Voltage | 6 kV conforming to EN 60947-1   |
| Signalling Type                        | Steady  |
| [Us] Rated Supply Voltage              | 24...120 V AC/DC at 50/60 Hz  |
| Supply Voltage Limits                  | 19.2...132 V DC<br>21.6...132 V AC  |
| Service Life                           | 100000 h at rated voltage and 25 °C   |
| Surge Withstand                        | 1 kV conforming to IEC 61000-4-5  |
| Device Presentation                    | Basic sub-assemblies  |

Disclaimer: This documentation is not intended as a substitute for and is not to be used for determining suitability or reliability of these products for specific user applications

## Environment

|                                       |  |
|---------------------------------------|--|
| Protective Treatment                  | TH   |
| Ambient Air Temperature For Storage   | -40...70 °C  |
| Ambient Air Temperature For Operation | -40...70 °C  |
| Electrical Shock Protection Class     | Class II conforming to IEC 60536   |
| Standards                             | EN/IEC 60947-5-4<br>EN/IEC 60947-1<br>JIS C8201-5-1<br>EN/IEC 60947-5-1<br>CSA C22.2 No 14<br>UL 508<br>JIS C8201-1  |
| Product Certifications                | BV<br>GL<br>UL listed<br>DNV<br>LROS (Lloyds register of shipping)<br>CSA  |
| Vibration Resistance                  | 5 gn (f= 2...500 Hz) conforming to IEC 60068-2-6   |
| Shock Resistance                      | 30 gn (duration = 18 ms) for half sine wave acceleration conforming to IEC 60068-2-27<br>50 gn (duration = 11 ms) for half sine wave acceleration conforming to IEC 60068-2-27 |
| Resistance To Fast Transients         | 2 kV conforming to IEC 61000-4-4   |
| Resistance To Electromagnetic Fields  | 10 V/m conforming to IEC 61000-4-3   |
| Resistance To Electrostatic Discharge | 6 kV on contact (on metal parts) conforming to IEC 61000-2-6<br>8 kV in free air (in insulating parts) conforming to IEC 61000-2-6   |
| Electromagnetic Emission              | Class B conforming to IEC 55011  |

## Packing Units

|                              |          |
|------------------------------|----------|
| Unit Type Of Package 1       | PCE      |
| Number Of Units In Package 1 | 1        |
| Package 1 Height             | 5.7 cm   |
| Package 1 Width              | 3.4 cm   |
| Package 1 Length             | 5.3 cm   |
| Package 1 Weight             | 20 g     |
| Unit Type Of Package 2       | S02      |
| Number Of Units In Package 2 | 100      |
| Package 2 Height             | 15 cm    |
| Package 2 Width              | 30 cm    |
| Package 2 Length             | 40 cm    |
| Package 2 Weight             | 2.333 kg |

## Contractual warranty

|          |           |
|----------|-----------|
| Warranty | 18 months |
|----------|-----------|

## Sustainability



**Green Premium™ label** is Schneider Electric's commitment to delivering products with best-in-class environmental performance. Green Premium promises compliance with the latest regulations, transparency on environmental impacts, as well as circular and low-CO<sub>2</sub> products.

**Guide to assessing product sustainability** is a white paper that clarifies global eco-label standards and how to interpret environmental declarations.

[Learn more about Green Premium >](#)

[Guide to assess a product's sustainability >](#)

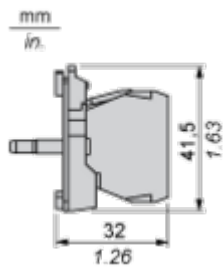
## Well-being performance

|  |   |
|--|---|
|  Mercury Free               |   |
|  Rohs Exemption Information | <a href="#">Yes</a>   |
| Reach Regulation   | <a href="#">REACH Declaration</a>   |
| Eu Rohs Directive  | Pro-active compliance (Product out of EU RoHS legal scope)  |
| China Rohs Regulation  | <a href="#">China RoHS declaration</a>  |
| Weee   | The product must be disposed on European Union markets following specific waste collection and never end up in rubbish bins |

Dimensions Drawings

Dimensions

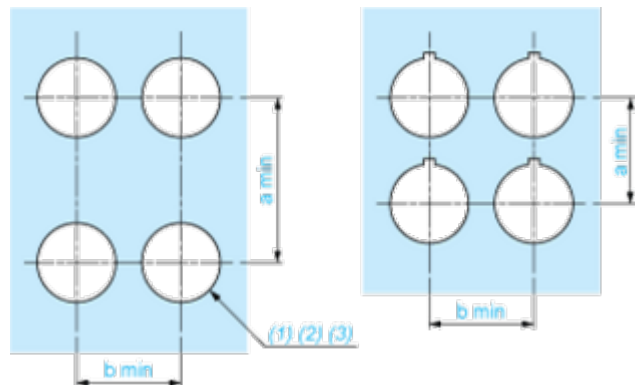
---



Mounting and Clearance

Panel Cut-out for Pushbuttons, Switches and Pilot Lights (Finished Holes, Ready for Installation)

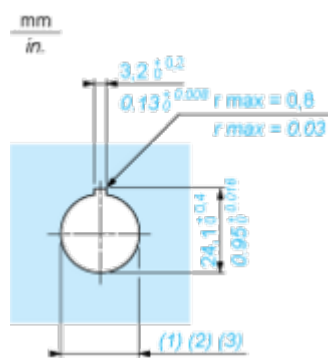
Connection by Screw Clamp Terminals or Plug-in Connectors or on Printed Circuit Board



- (1) Diameter on finished panel or support
- (2) For selector switches and Emergency stop buttons, use of an anti-rotation plate type ZB5AZ902 is recommended.
- (3) Ø22.5 mm recommended ( $\text{Ø}22.3 \begin{smallmatrix} +0.4 \\ 0 \end{smallmatrix}$ ) / Ø0.89 in. recommended ( $\text{Ø}0.88 \text{ in. } \begin{smallmatrix} +0.016 \\ 0 \end{smallmatrix}$ )

| Connections                                   | a in mm | a in in. | b in mm | b in in. |
|---|---------|----------|---------|----------|
| By screw clamp terminals or plug-in connector | 40      | 1.57     | 30      | 1.18     |
| By Faston connectors                          | 45      | 1.77     | 32      | 1.26     |
| On printed circuit board                      | 30      | 1.18     | 30      | 1.18     |

Detail of Lug Recess



- (1) Diameter on finished panel or support
- (2) For selector switches and Emergency stop buttons, use of an anti-rotation plate type ZB5AZ902 is recommended.
- (3) Ø22.5 mm recommended ( $\text{Ø}22.3 \begin{smallmatrix} +0.4 \\ 0 \end{smallmatrix}$ ) / Ø0.89 in. recommended ( $\text{Ø}0.88 \text{ in. } \begin{smallmatrix} +0.016 \\ 0 \end{smallmatrix}$ )