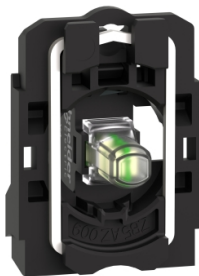


Product data sheet

Specifications



Complete body light block assembly,
Harmony XB5, plastic, universal
LED, screw clamp terminals,
110...120V AC

ZB5AVG1

Product availability: Stock - Normally stocked in distribution facility

Important message: A change in appearance may be noted on the product but does not affect its use in terms of function and safety. This makes it compatible with our Universal LED blocks

Price*: 57.00 USD

Main

| | |
|-------------------------------|------------------------------------------------------------------------------------------------------------------------------------------|
| Range of Product | Harmony XB5 |
| Product or Component Type | Complete body/light block assembly |
| Device short name | ZB5 |
| Fixing collar material | Plastic |
| Sale per indivisible quantity | 1 |
| Connections - terminals | Screw clamp terminals, <= 2 x 1.5 mm² with cable end IEC 60947-1 Screw clamp terminals, >= 1 x 0.22 mm² without cable end IEC 60947-1 |
| Light source | Universal LED |
| Bulb base | Integral LED |
| Light source colour | White |

Complementary

| | |
|----------------------------------------|-------------------------------------------------------------------------------------------|
| CAD overall width | 1.2 in (30 mm) |
| CAD overall height | 1.7 in (42 mm) |
| CAD overall depth | 1.3 in (32 mm) |
| Terminals description ISO n°1 | (X1-X2)PL |
| Net Weight | 0.049 lb(US) (0.022 kg) |
| Tightening torque | 7.08...10.6 lbf.in (0.8...1.2 N.m) IEC 60947-1 |
| Shape of screw head | Cross Philips no 1 Cross pozidriv No 1 Slotted flat Ø 4 mm Slotted flat Ø 5.5 mm |
| [Ui] rated insulation voltage | 600 V 3)IEC 60947-1 |
| [Uimp] rated impulse withstand voltage | 6 kV IEC 60947-1 |
| Signalling type | Steady |
| [Us] rated supply voltage | 110...120 V AC 50/60 Hz |
| Current Consumption | 14 mA |
| Service life | 100000 h at rated voltage and 25 °C |
| Surge withstand | 1 kV IEC 61000-4-5 |

Price is "List Price" and may be subject to a trade discount – check with your local distributor or retailer for actual price.

Disclaimer: This documentation is not intended as a substitute for and is not to be used for determining suitability or reliability of these products for specific user applications

| | |
|---------------------|----------------------|
| device presentation | Basic sub-assemblies |
|---------------------|----------------------|

Environment

| | |
|---------------------------------------|--------------------------------------------------------------------------------------------------------------------|
| protective treatment | TH |
| Ambient Air Temperature for Storage | -40.0000000000...158.0000000000 °F (-40...70 °C) |
| Ambient Air Temperature for Operation | -40.0000000000...158.0000000000 °F (-40...70 °C) |
| Electrical shock protection class | Class II IEC 60536 |
| Standards | IEC 60947-5-1 IEC 60947-5-4 CSA C22.2 No 14 IEC 60947-1 JIS C8201-5-1 UL 508 JIS C8201-1 |
| Product Certifications | BV LROS (Lloyds register of shipping) CSA DNV UL Listed GL |
| Vibration resistance | 5 gn 2...500 Hz)IEC 60068-2-6 |
| Shock resistance | 30 gn 18 ms) half sine wave acceleration IEC 60068-2-27 50 gn 11 ms) half sine wave acceleration IEC 60068-2-27 |
| Resistance to fast transients | 2 kV IEC 61000-4-4 |
| Resistance to electromagnetic fields | 9.1 V/m (10 V/m) IEC 61000-4-3 |
| Resistance to electrostatic discharge | 6 kV on contact (on metal parts) IEC 61000-2-6 8 kV in free air (in insulating parts) IEC 61000-2-6 |
| Electromagnetic emission | Class B IEC 55011 |

Ordering and shipping details

| | |
|-------------------|---------------|
| Category | US10CS222469 |
| Discount Schedule | 0CS2 |
| GTIN | 3389110907858 |
| Returnability | Yes |
| Country of origin | US |

Packing Units

| | |
|------------------------------|------------------|
| Unit Type of Package 1 | PCE |
| Number of Units in Package 1 | 1 |
| Package 1 Height | 0.9 in (2.4 cm) |
| Package 1 Width | 1.9 in (4.8 cm) |
| Package 1 Length | 2.05 in (5.2 cm) |
| Package 1 Weight | 0.7 oz (20.0 g) |
| Unit Type of Package 2 | S02 |
| Number of Units in Package 2 | 100 |
| Package 2 Height | 5.9 in (15 cm) |
| Package 2 Width | 11.8 in (30 cm) |

| | |
|------------------|-------------------------|
| Package 2 Length | 15.7 in (40 cm) |
| Package 2 Weight | 5.132 lb(US) (2.328 kg) |

Contractual warranty

| | |
|----------|-----------|
| Warranty | 18 months |
|----------|-----------|

Sustainability

Green Premium™ label is Schneider Electric's commitment to delivering products with best-in-class environmental performance. Green Premium promises compliance with the latest regulations, transparency on environmental impacts, as well as circular and low-CO₂ products.

Guide to assessing product sustainability is a white paper that clarifies global eco-label standards and how to interpret environmental declarations.

[Learn more about Green Premium >](#)

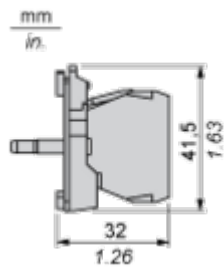
[Guide to assess a product's sustainability >](#)

Well-being performance

| | |
|--------------------------------------------------------------------------------------------------------------|---------------------------------------------------------------------------------------------------------------------------------------------------------------------------------------------------------------------------------------------------------------------------------------------|
|  Mercury Free | |
|  Rohs Exemption Information | Yes |
| Reach Regulation | REACH Declaration |
| Eu Rohs Directive | Pro-active compliance (Product out of EU RoHS legal scope) |
| China Rohs Regulation | China RoHS declaration |
| Weee | The product must be disposed on European Union markets following specific waste collection and never end up in rubbish bins. |
| California Proposition 65 | WARNING: This product can expose you to chemicals including: Lead and lead compounds, which is known to the State of California to cause cancer and birth defects or other reproductive harm. For more information go to www.P65Warnings.ca.gov |

Dimensions Drawings

Dimensions



Mounting and Clearance

Panel Cut-out for Pushbuttons, Switches and Pilot Lights (Finished Holes, Ready for Installation)

Connection by Screw Clamp Terminals or Plug-in Connectors or on Printed Circuit Board



- (1) Diameter on finished panel or support
- (2) For selector switches and Emergency stop buttons, use of an anti-rotation plate type ZB5AZ902 is recommended.
- (3) Ø22.5 mm recommended ($\text{Ø}22.3 \begin{smallmatrix} +0.4 \\ 0 \end{smallmatrix}$) / Ø0.89 in. recommended ($\text{Ø}0.88 \text{ in.} \begin{smallmatrix} +0.016 \\ 0 \end{smallmatrix}$)

| Connections | a in mm | a in in. | b in mm | b in in. |
|-----------------------------------------------|---------|----------|---------|----------|
| By screw clamp terminals or plug-in connector | 40 | 1.57 | 30 | 1.18 |
| By Faston connectors | 45 | 1.77 | 32 | 1.26 |
| On printed circuit board | 30 | 1.18 | 30 | 1.18 |

Detail of Lug Recess



- (1) Diameter on finished panel or support
- (2) For selector switches and Emergency stop buttons, use of an anti-rotation plate type ZB5AZ902 is recommended.
- (3) Ø22.5 mm recommended ($\text{Ø}22.3 \begin{smallmatrix} +0.4 \\ 0 \end{smallmatrix}$) / Ø0.89 in. recommended ($\text{Ø}0.88 \text{ in.} \begin{smallmatrix} +0.016 \\ 0 \end{smallmatrix}$)