



Safety position switch



Powering Business Worldwide™

Part no. LS-11-ZB
Article no. 106819

Catalog No. LS-11-ZB

Delivery programme

Basic function			Position switches Safety position switches
Part group reference			LS(4)...ZB
Product range			Safety position switches
Protection type			IP66
Description			With the actuator inserted, the N/O contact is open and the NC contact is closed.
Contacts			
N/O = Normally open			1 N/O
N/C = Normally closed			1 NC
Notes			= safety function, by positive opening to IEC/EN 60947-5-1
Contact sequence			
Approval			
Housing			Insulated material
Connection type			Cage Clamp
Notes	With the actuator inserted, the NO contact is open and the NC contact is closed.		
Notes	<p>Switch must never be used as a mechanical stop!</p> <p>For degree of protection IP65, use V-M20 cable glands with connecting thread of max. 9 mm length</p>		

Approvals

Product Standards
UL File No.
UL Category Control No.

IEC/EN 60947-5; UL 508; CSA-C22.2 No. 14; CE marking
E29184
NKCR

General

Standards			IEC/EN 60947
Climatic proofing			Damp heat, constant, to IEC 60068-2-78; damp heat, cyclical, to IEC 60068-2-30
Ambient temperature		°C	- 25 - + 70
Mounting position			As required
Protection type			IP66
Terminal capacities		mm ²	
Solid		mm ²	1 x (0.5 - 1.5) 2 x (0.5 - 1.5)
Flexible with ferrules to DIN 46228		mm ²	1 x (0.5 - 1.5) 2 x (0.5 - 1.5)
Terminal screw			PH1
Tightening torque of terminal screw		Nm	0.4

Contacts/switching capacity

Rated impulse withstand voltage	U _{imp}	V AC	6000
Rated insulation voltage	U _i	V	500
Overvoltage category/pollution degree			III/3
Rated operational current	I _e	A	
AC-15			
24 V	I _e	A	6
230 V/240 V	I _e	A	6
400 V/415 V	I _e	A	4
DC-13			
24 V	I _e	A	3
110 V	I _e	A	0.6
220 V	I _e	A	0.3
Supply frequency		Hz	max. 400
Short-circuit rating to IEC/EN 60947-5-1			
max. fuse		A gG/ gL	6
Repetition accuracy		mm	0.15
Rated conditional short-circuit current		kA	1

Mechanical variables

Lifespan		S	
Standard-action contact	Operations	x 10 ⁶	1.5
Mechanical shock resistance (half-sinusoidal shock, 20 ms)			
Standard-action contact		g	25
Operating frequency	Operations/ h		≦ 1800

Actuation

Mechanical			
Actuating force at beginning/end of stroke			
ZB/ZBZ (push in/pull out)		N	10/5

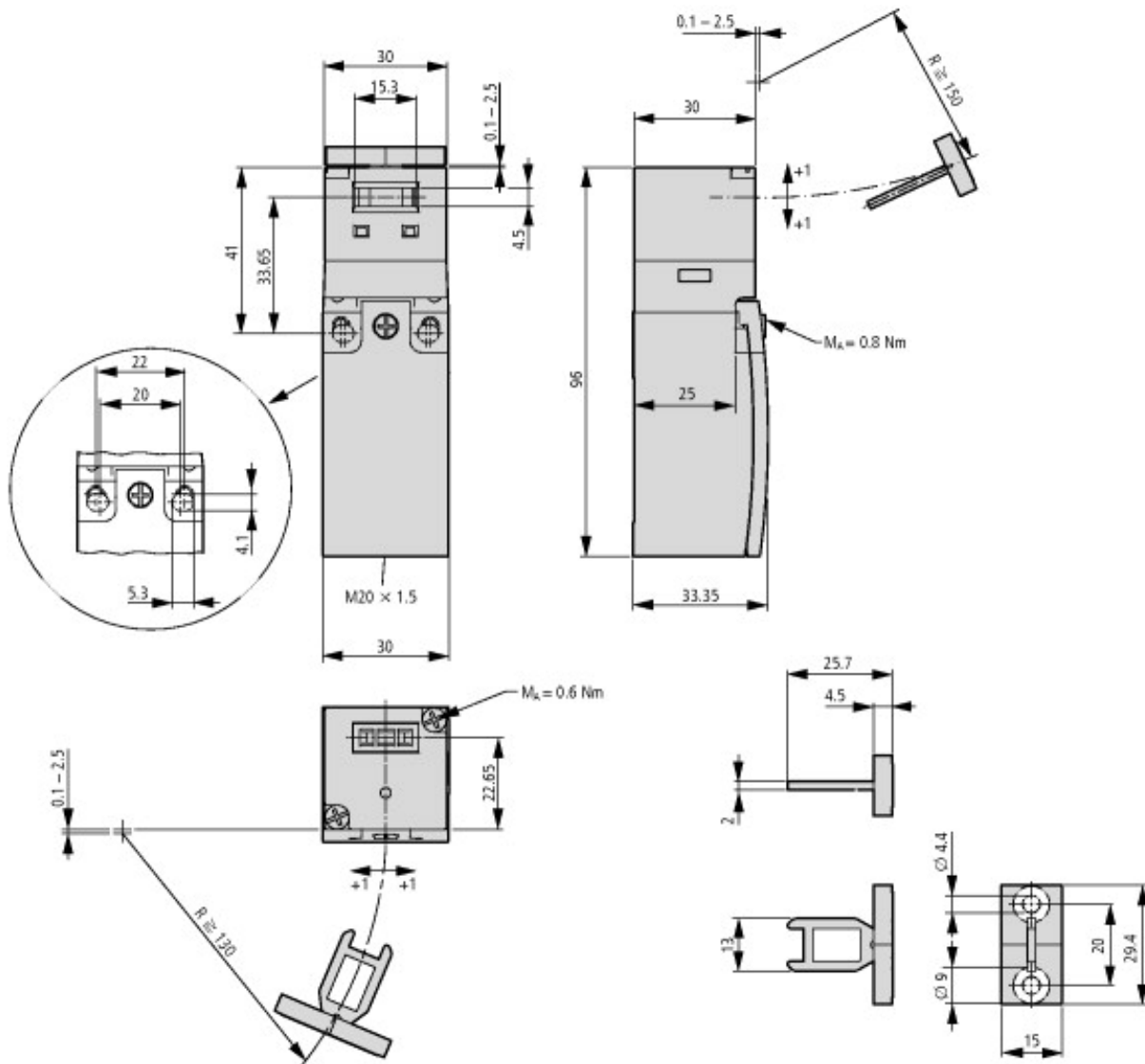
Technical data ETIM 5.0

Sensors (EG000026) / End switch (EC000030)
Electric engineering, automation, process control engineering / Binary sensor technology, safety-related sensor technology / Position switch / Position switch (Type 1)
(ec1@ss8-27-27-06-01 [AGZ382011])

Width sensor		mm	30
Diameter sensor		mm	0
Height of sensor		mm	96
Length of sensor		mm	33.35

Rated operation current I _e at AC-15, 24 V		A	10
Rated operation current I _e at AC-15, 125 V		A	6
Rated operation current I _e at AC-15, 230 V		A	6
Rated operation current I _e at DC-13, 24 V		A	3
Rated operation current I _e at DC-13, 125 V		A	0.8
Rated operation current I _e at DC-13, 230 V		A	0.3
Switching function			Slow-action switch
Output electronic			No
Forced opening			Yes
Number of safety auxiliary contacts			0
Number of contacts as normally closed contact			0
Number of contacts as normally open contact			0
Number of contacts as change-over contact			0
Type of interface			None
Type of interface for safety communication			None
Housing according to norm			-
Construction type housing			Cuboid
Material housing			Plastic
Coating housing			-
Type of control element			-
Alignment of the control element			-
Type of electric connection			Cable entry metrical
With status indication			No
Suited for safety functions			Yes
Explosion safety category for gas			None
Explosion safety category for dust			None
Ambient temperature during operating		°C	-25 - 70
Degree of protection (IP)			IP65

Dimensions



Switch must not be used as a mechanical stop
 Terminal marking according to EN 50 013
 Travel [mm]
 = Contact closed
 = Contact open
 Zw = Positive opening sequence

Additional product information (links)

IL05208003Z (AWA1310-2374) Safety position switch

IL05208003Z (AWA1310-2374) Safety position switch

ftp://ftp.moeller.net/DOCUMENTATION/AWA_INSTRUCTIONS/IL05208003Z2012_12.pdf

IL05208004Z (AWA1310-2367) Safety position switch

IL05208004Z (AWA1310-2367) Safety position switch

ftp://ftp.moeller.net/DOCUMENTATION/AWA_INSTRUCTIONS/IL05208004Z2012_12.pdf